

P R O P E R T Y O N E
O F F I C E F U R N I T U R E

About Us

Property One Office Furniture, part of the Property One Group, offers complete turnkey solutions for your office. We provide everything from floor-to-ceiling partitions, office furniture, phone booths—everything your office needs.

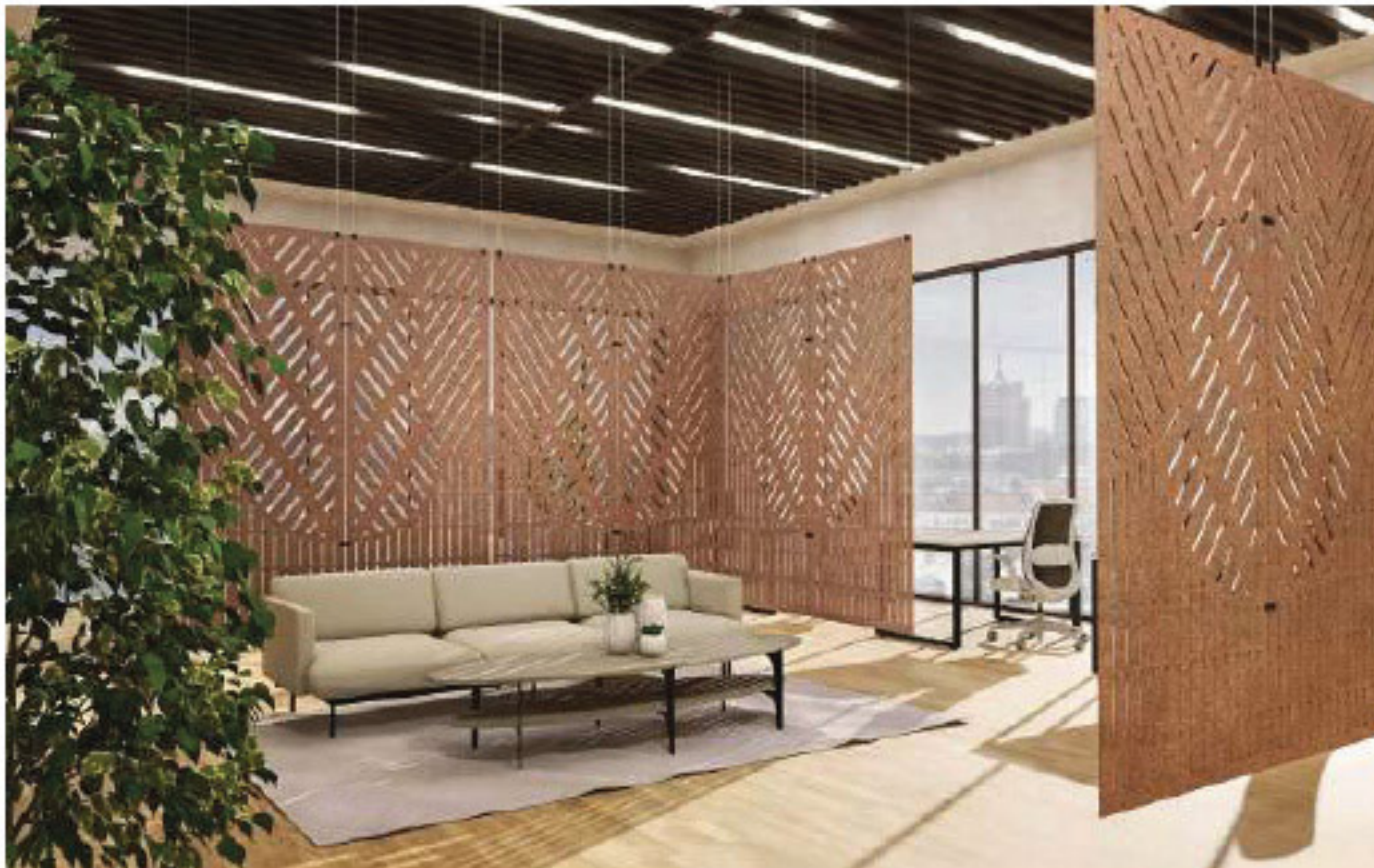
Our goal is to create functional and inspiring workspaces that enhance productivity and foster collaboration. With a focus on quality and efficiency, we deliver seamless solutions tailored to your unique needs, transforming your office into a space where your team can thrive.

We work with some of the best partners from around the world to ensure top-tier products and solutions for every project. We have opened **4 showrooms**, including our newest one in Serbia and have successfully completed over 30 projects to date.

Our commitment to excellence and innovation is reflected in every showroom and project, showcasing our expertise in creating inspiring office spaces.

Our partners

Our Furniture Partners



MOLTO LUCE

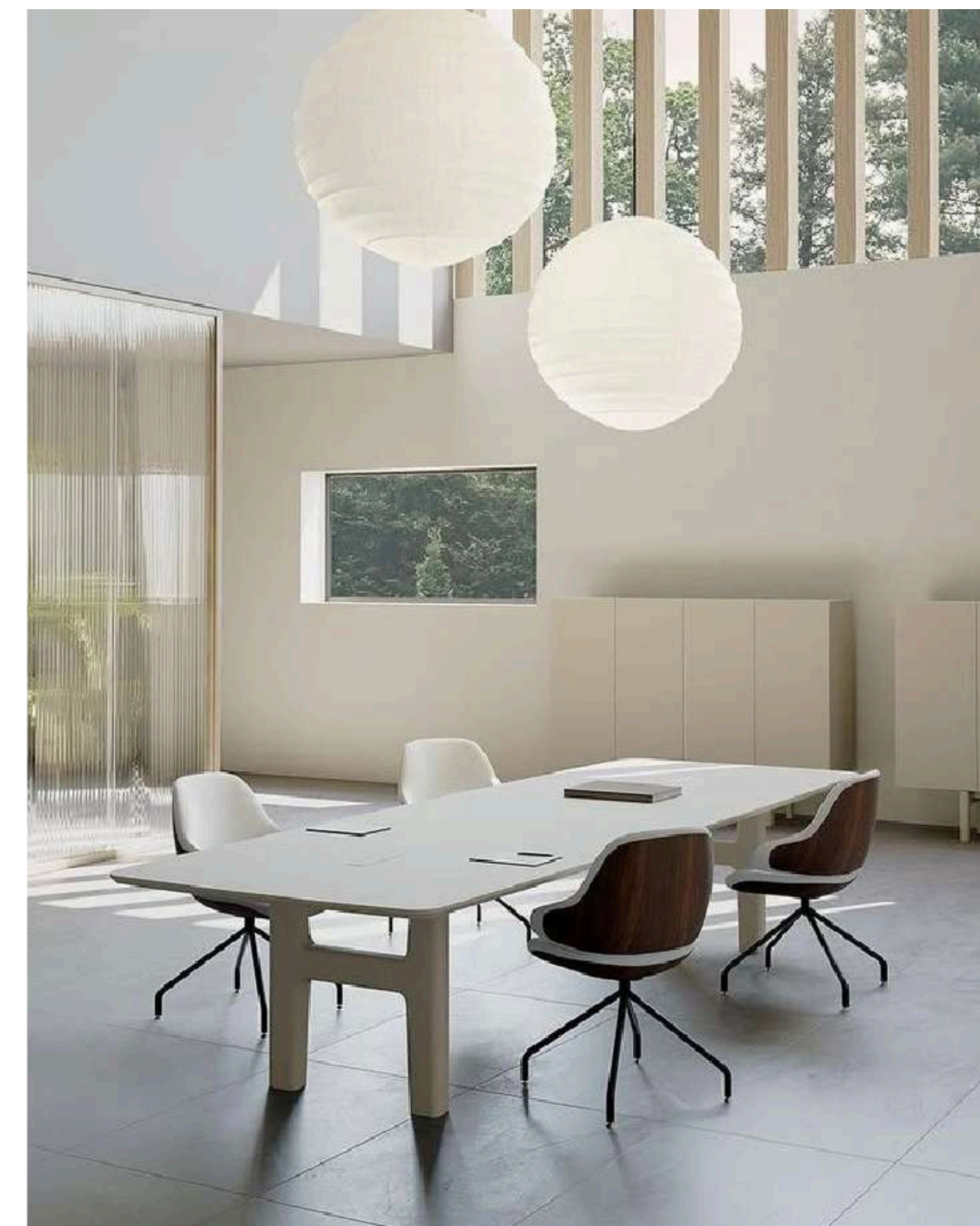
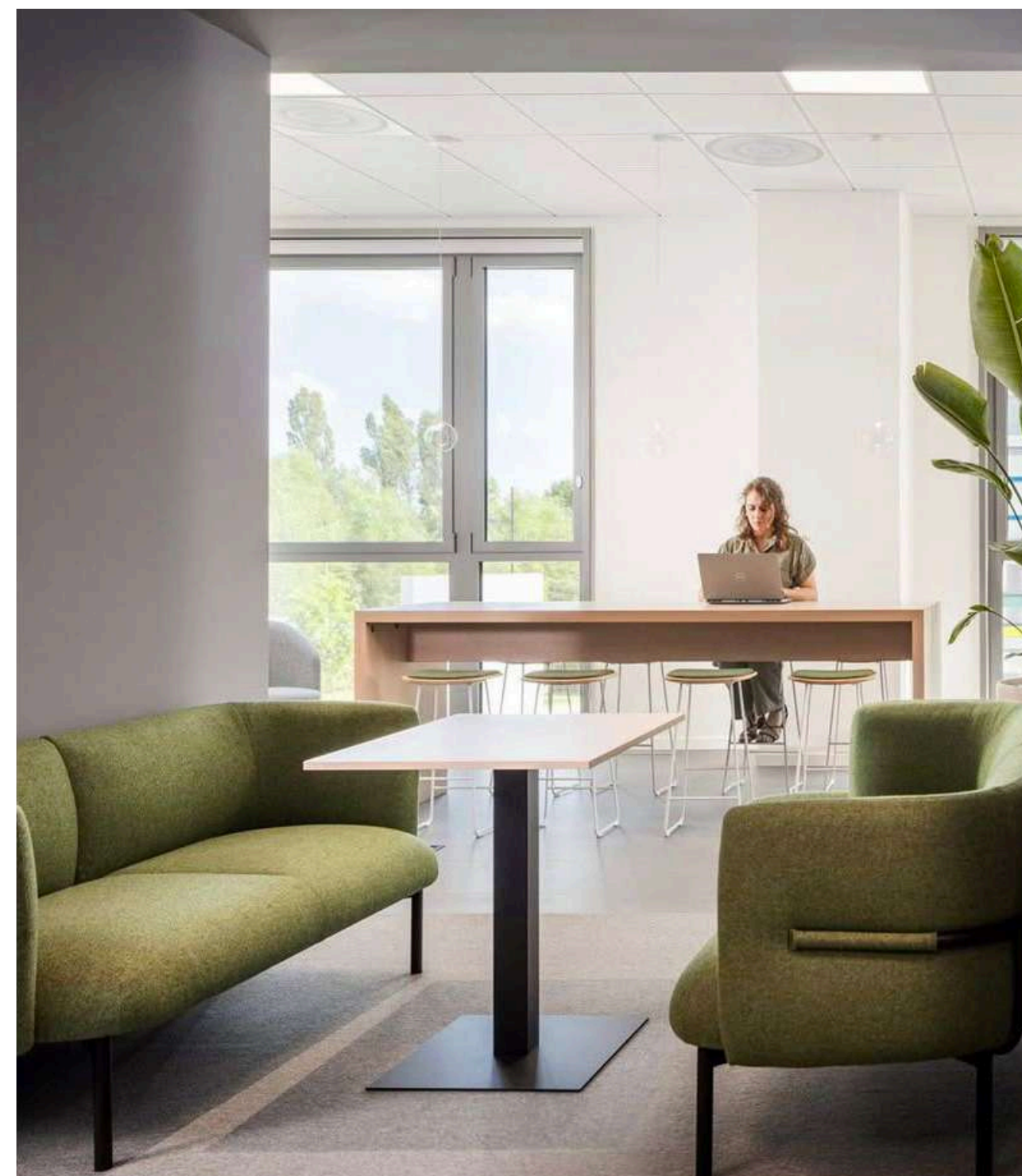


MUTE.

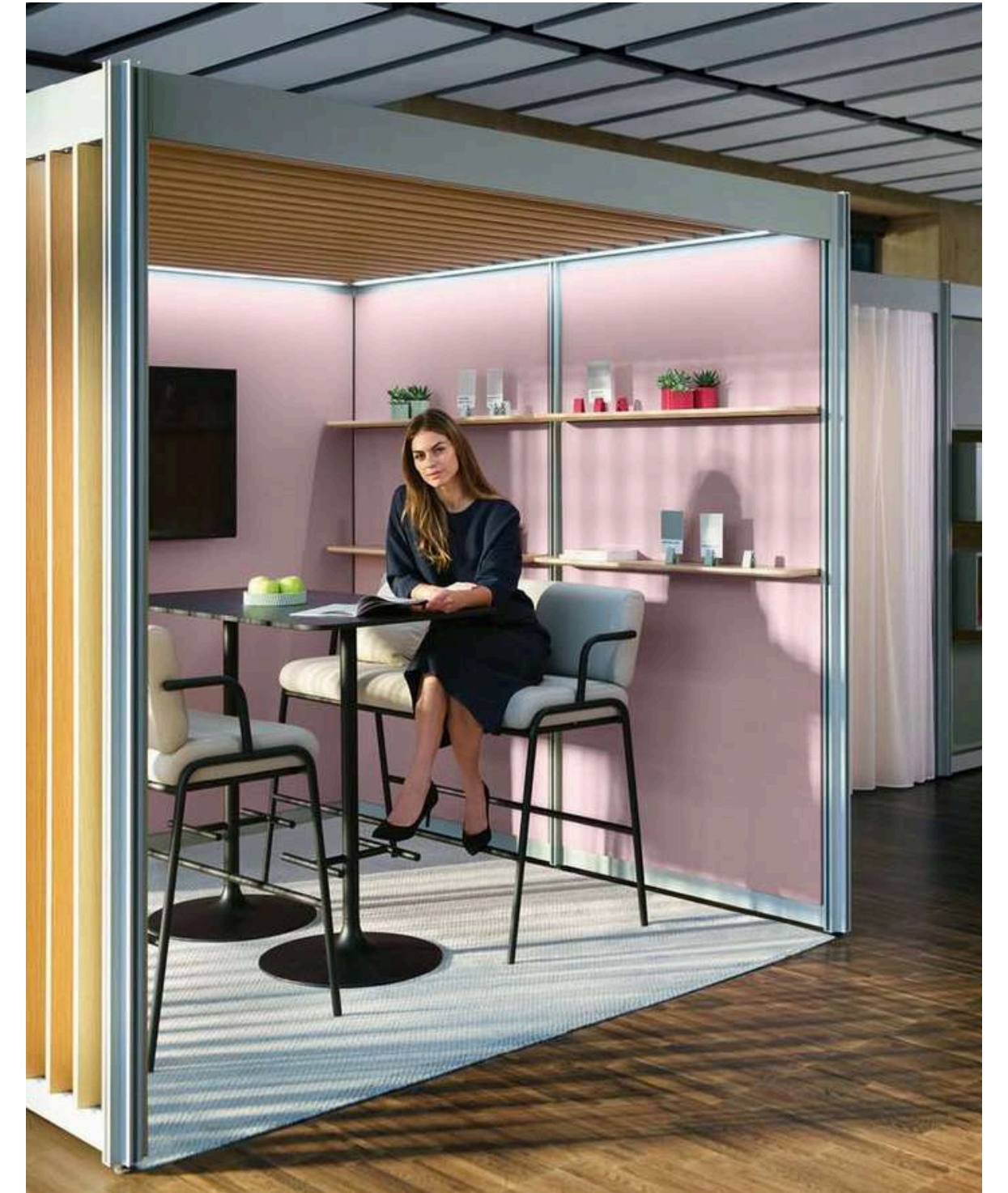
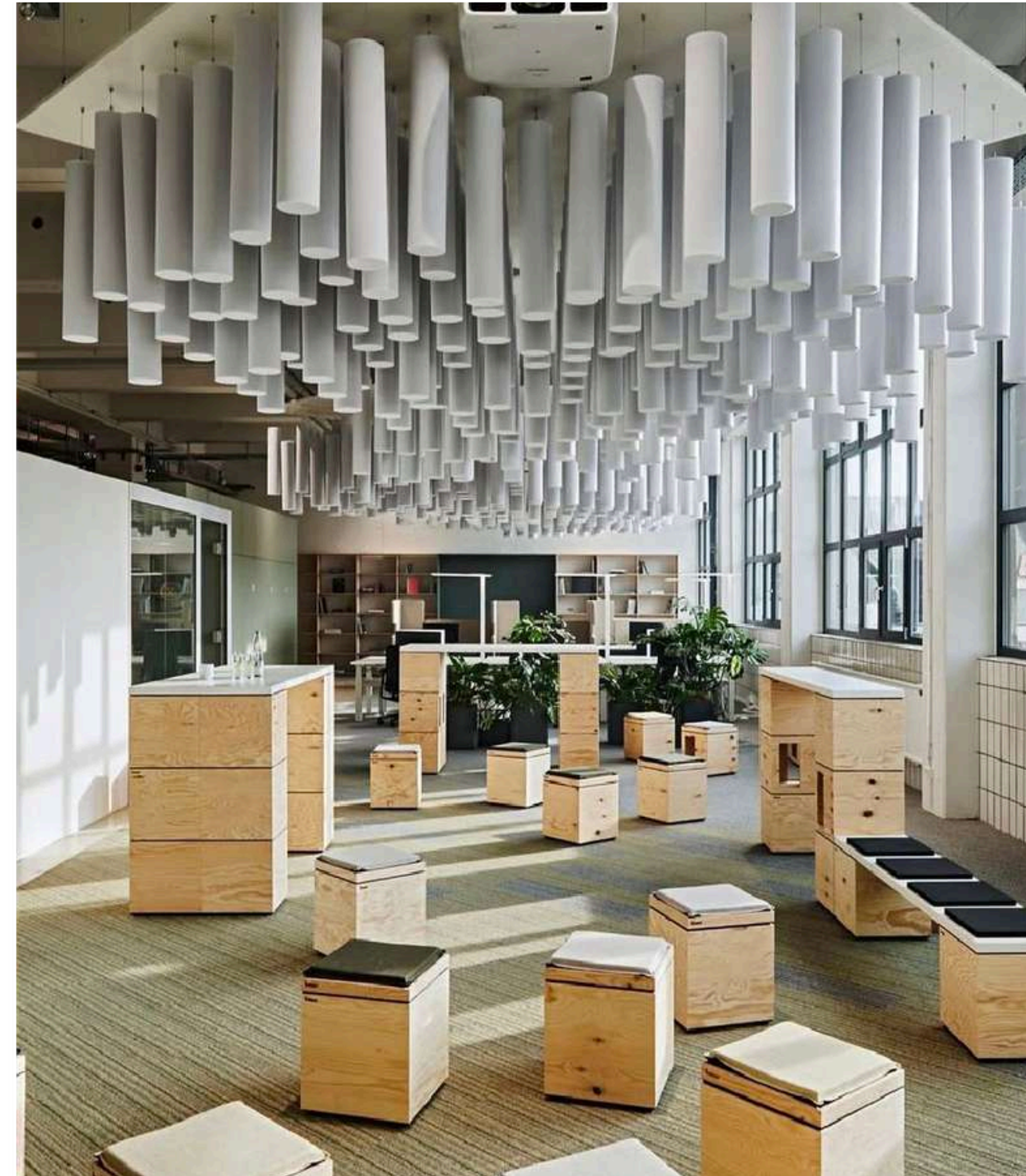
Wilkhahn



Our Furniture Partners

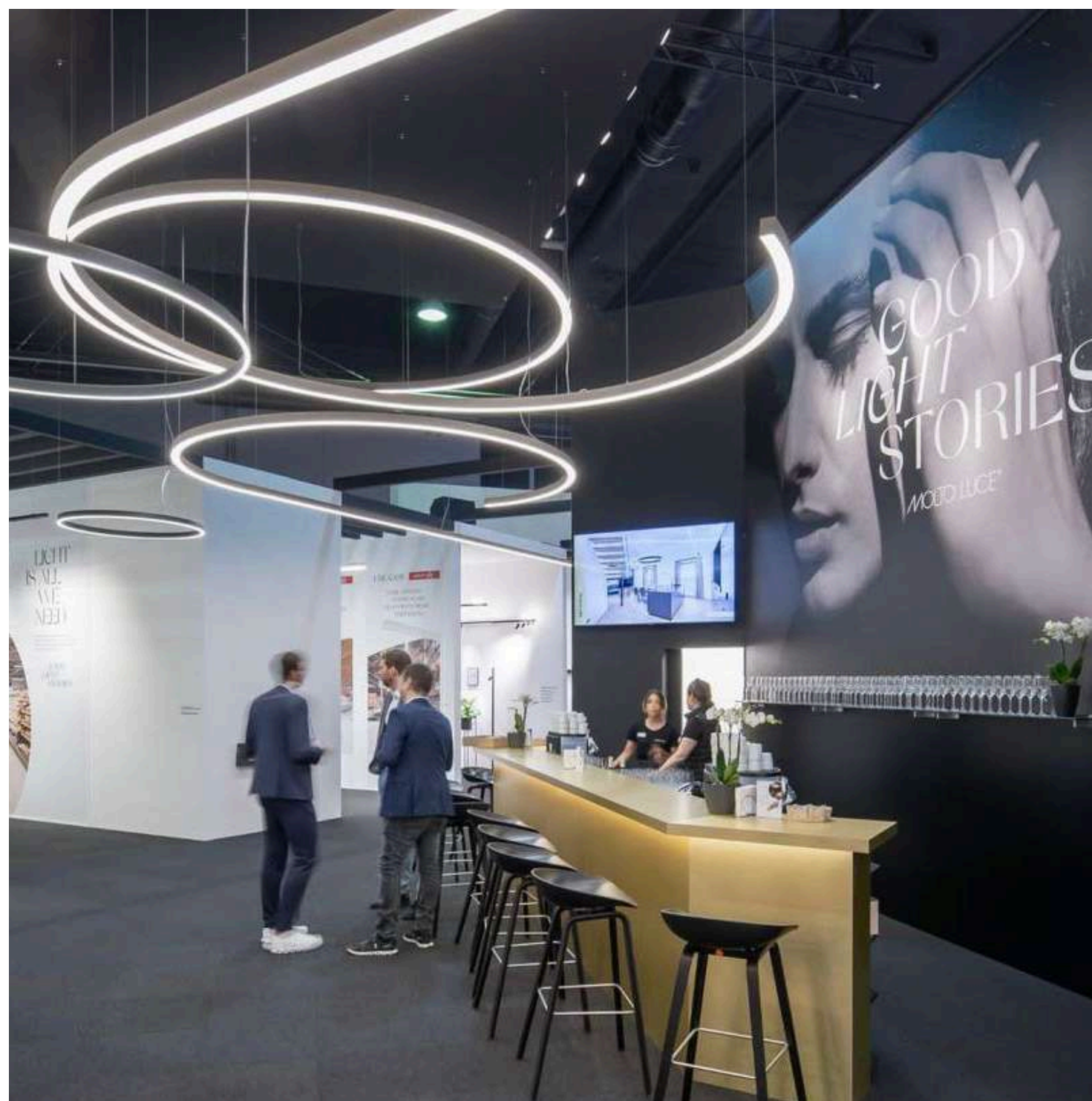
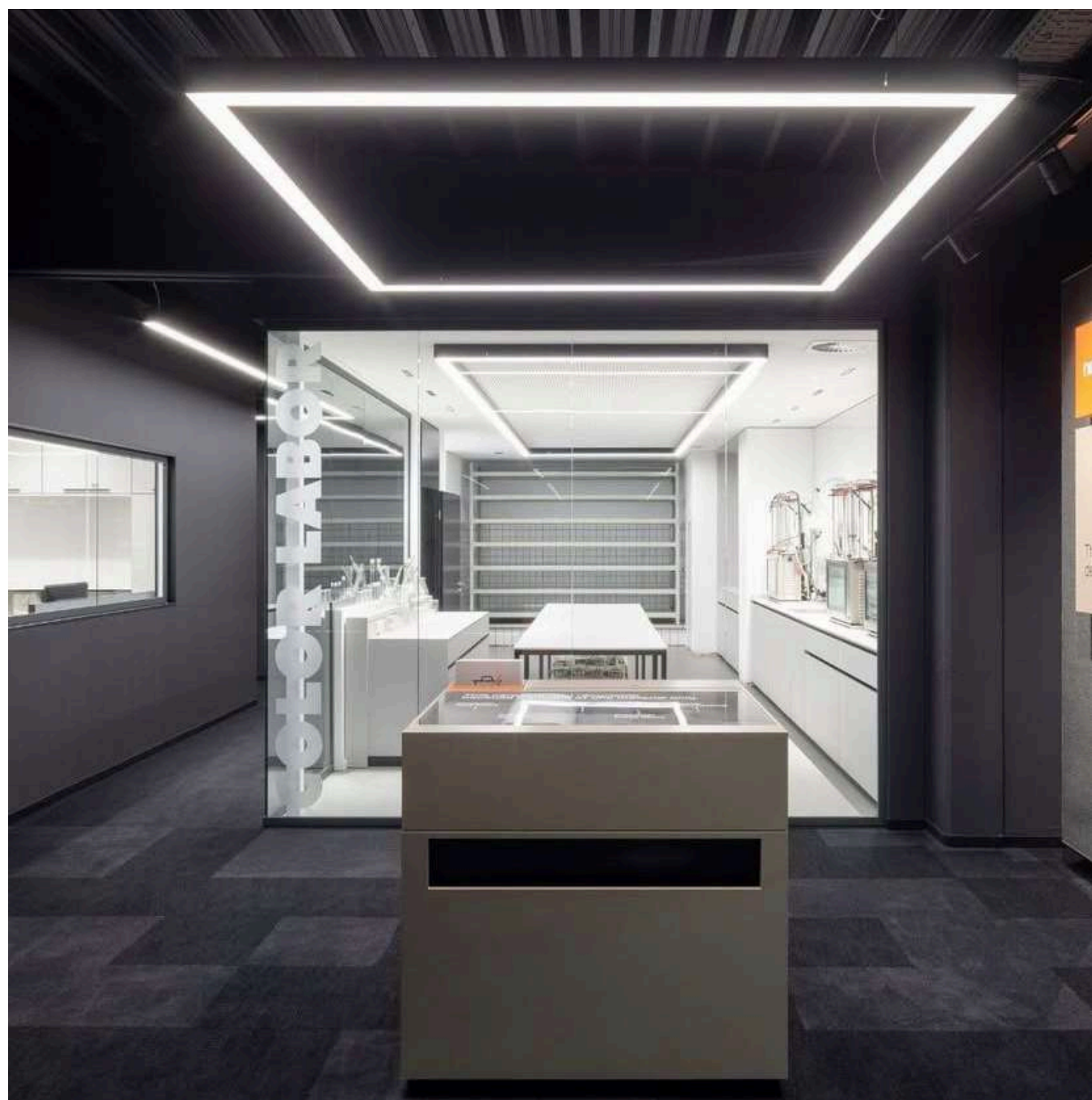
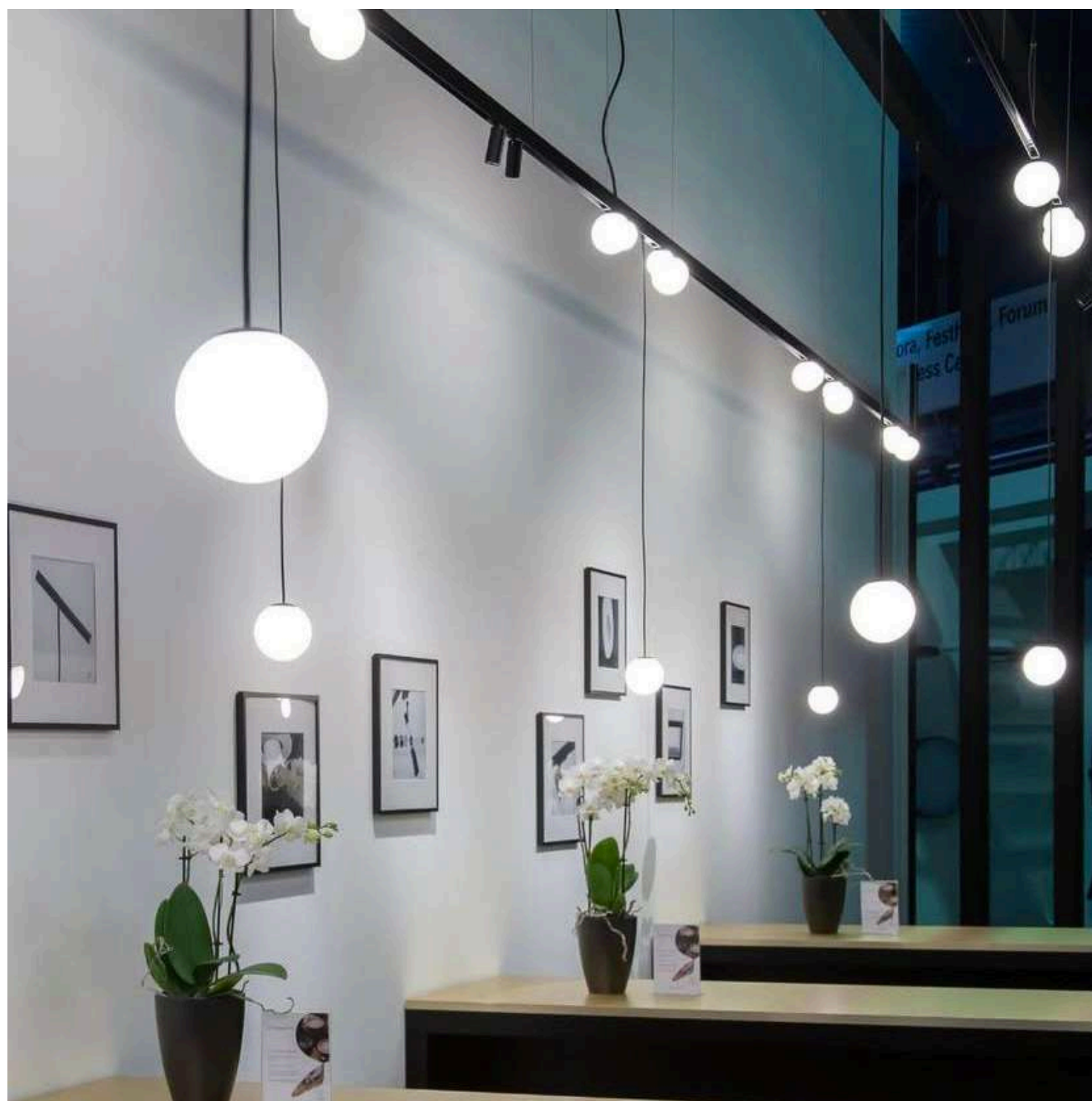


Our Furniture Partners



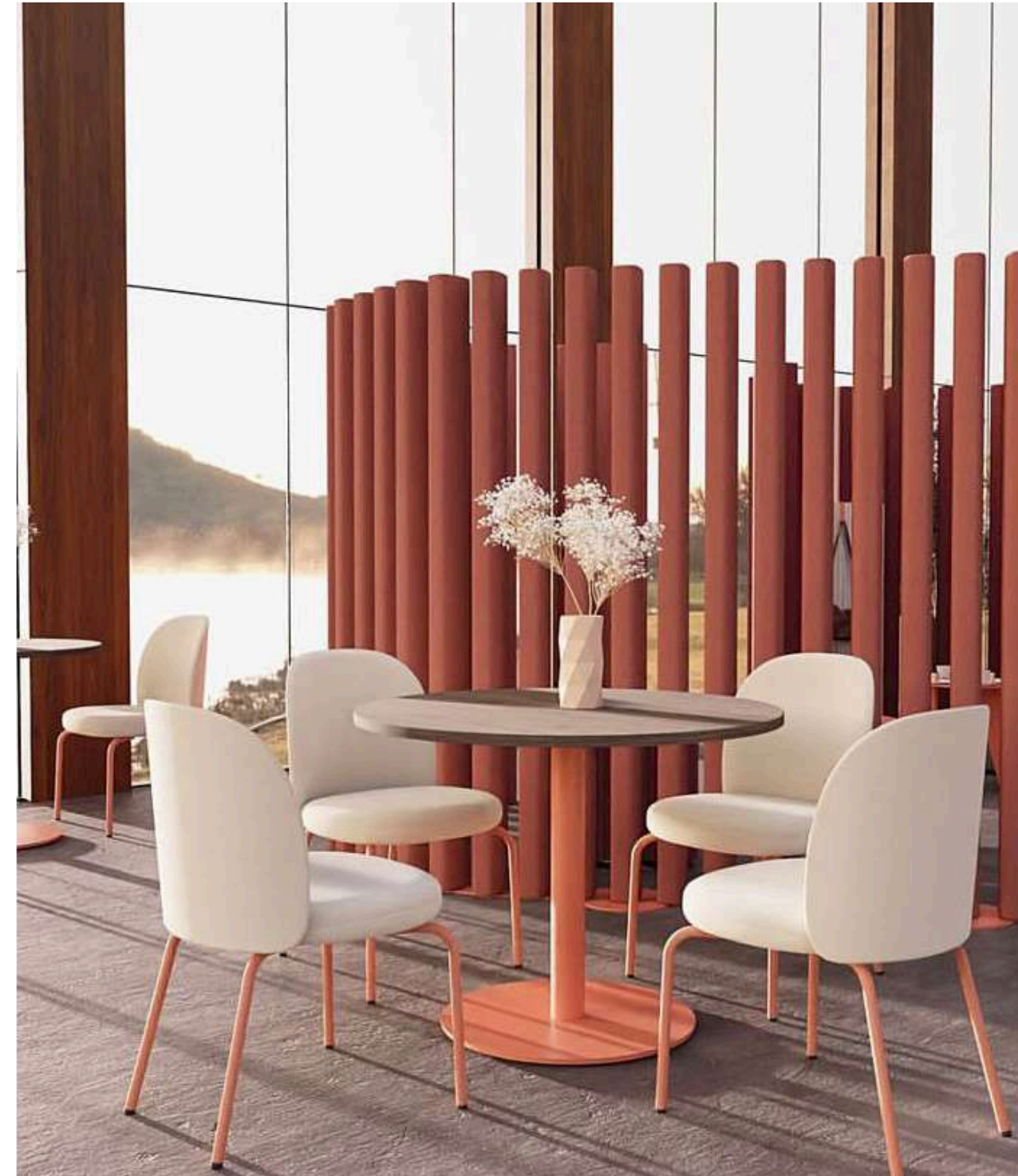
bene

Our Furniture Partners



MOLTO LUCE®

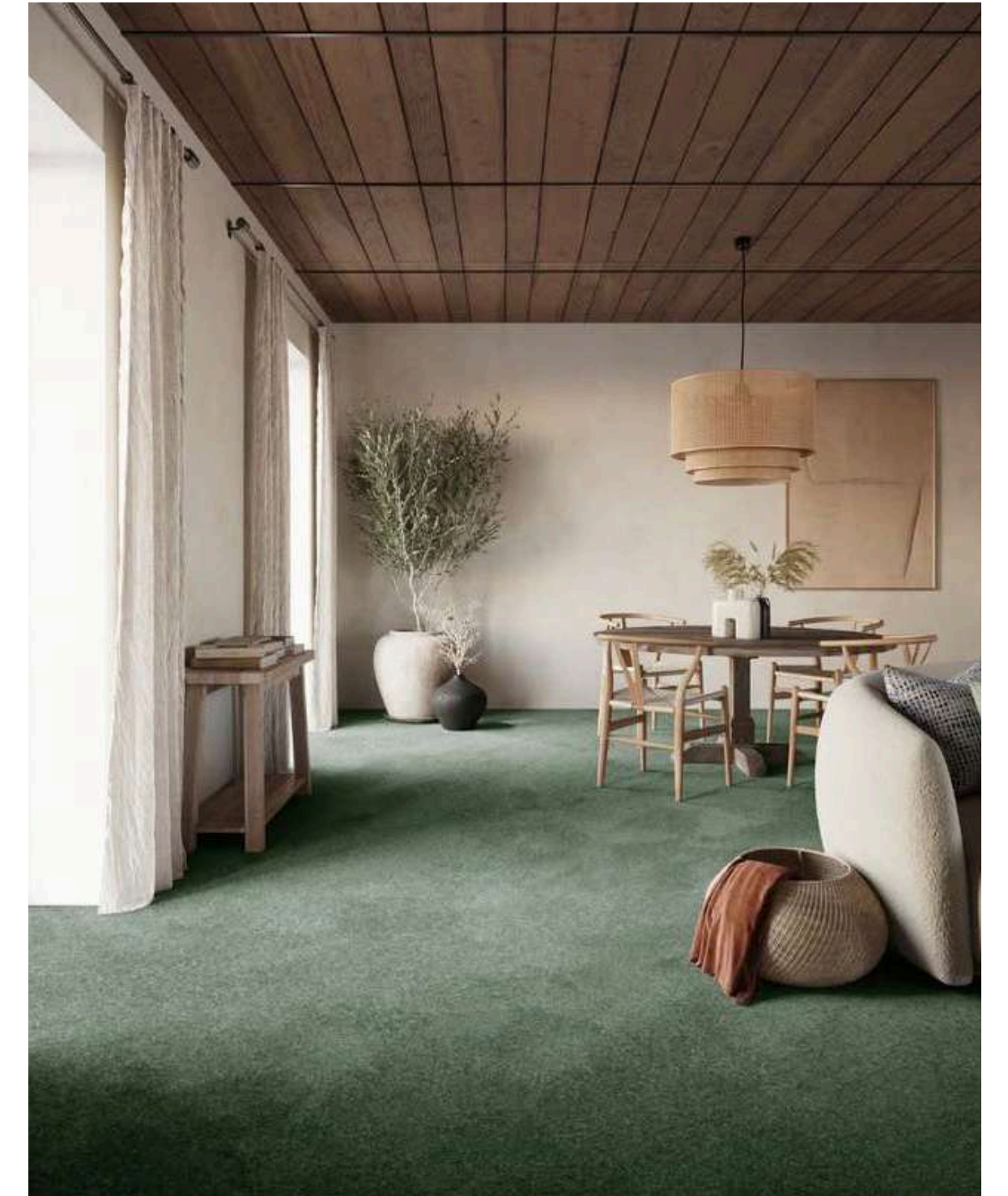
Our Furniture Partners



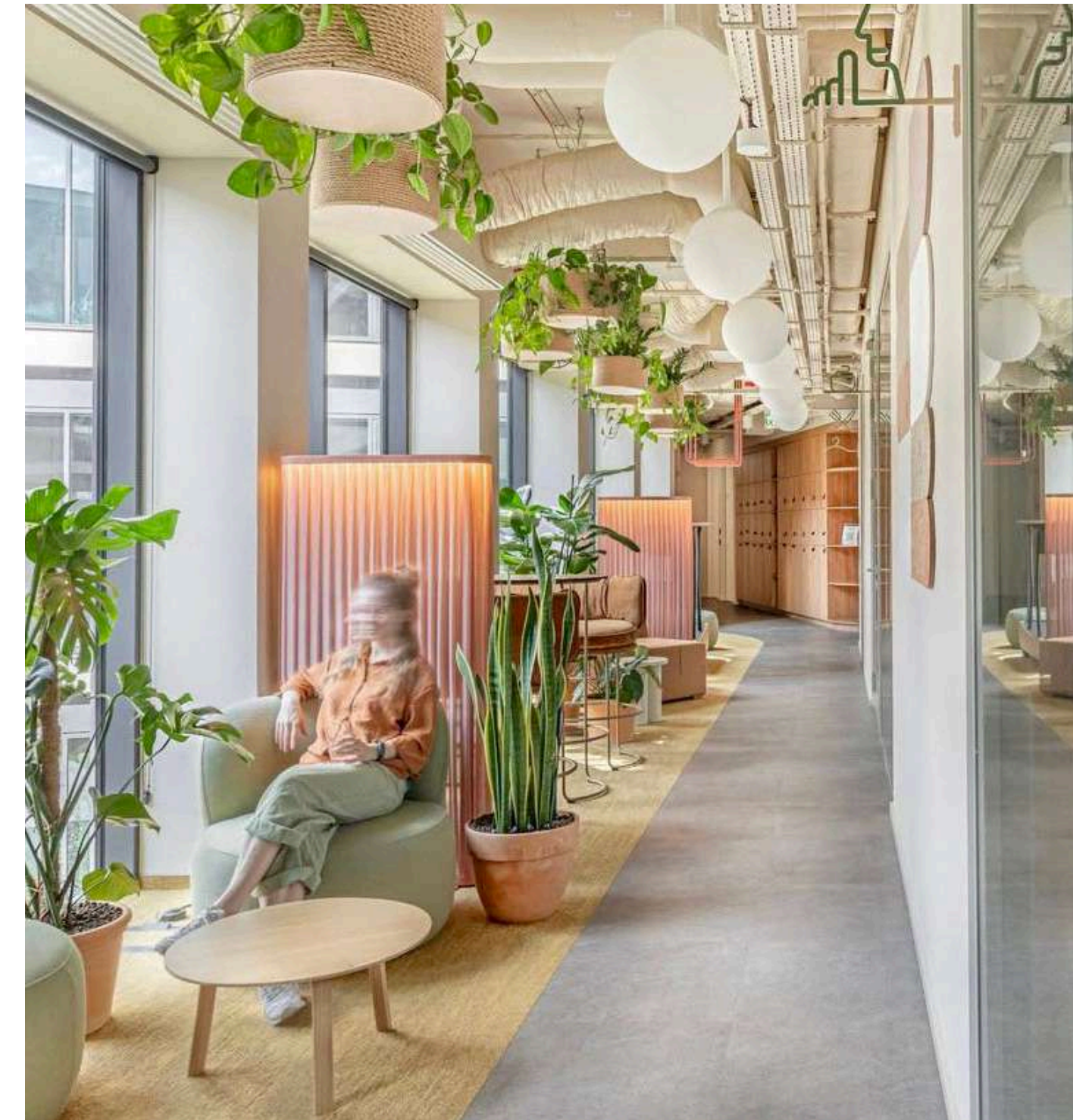
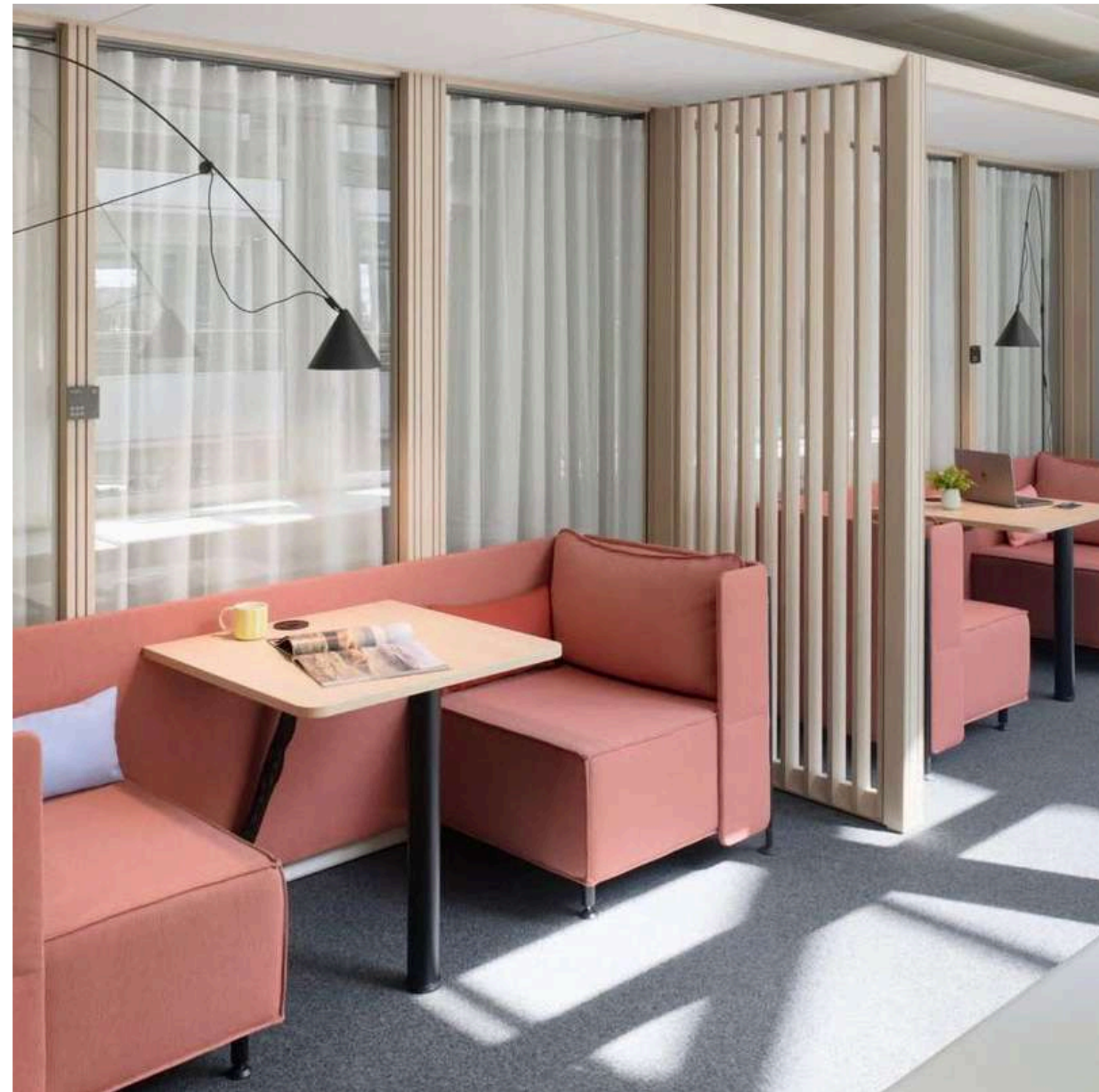
Our Furniture Partners



Our Furniture Partners

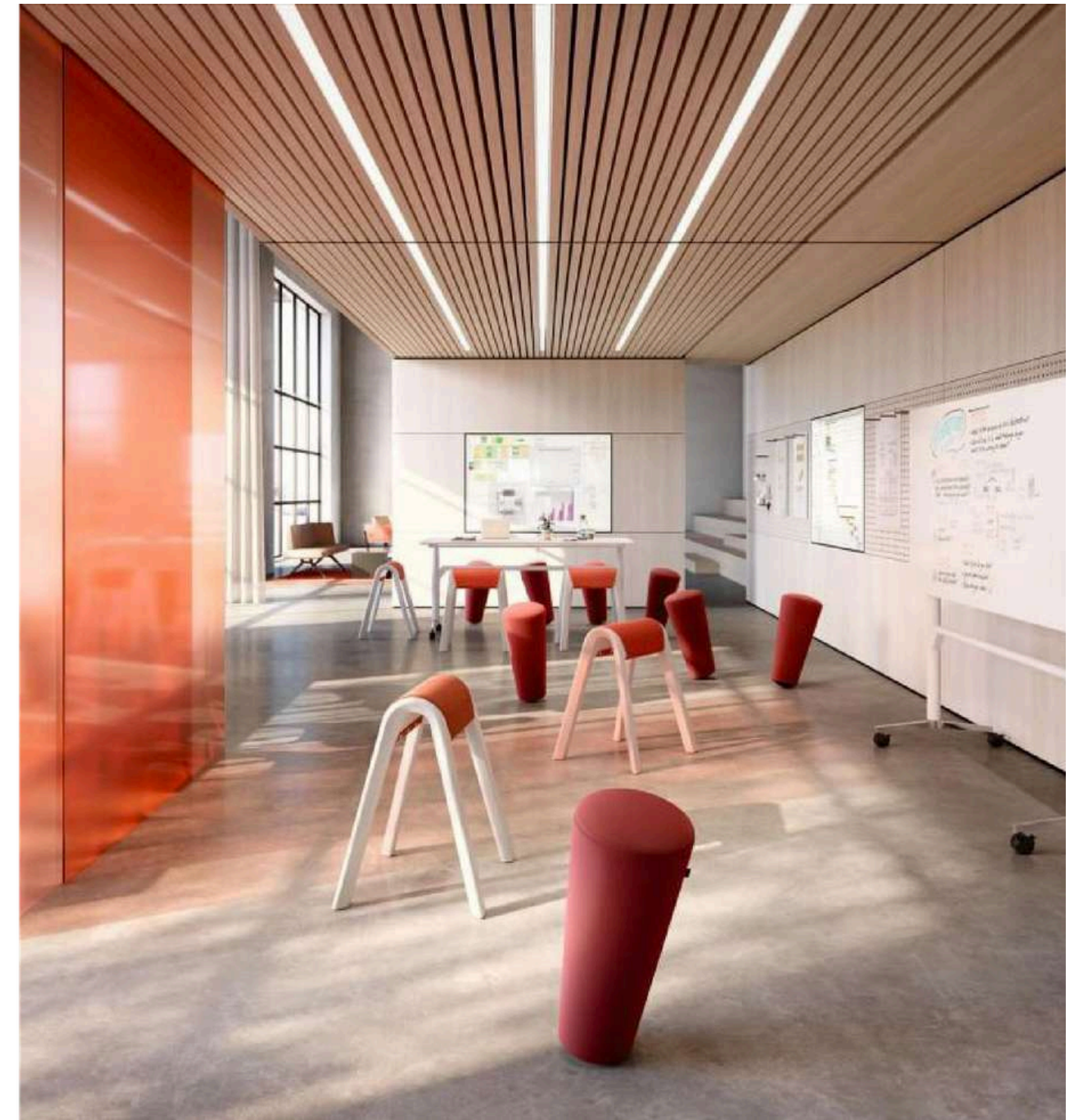
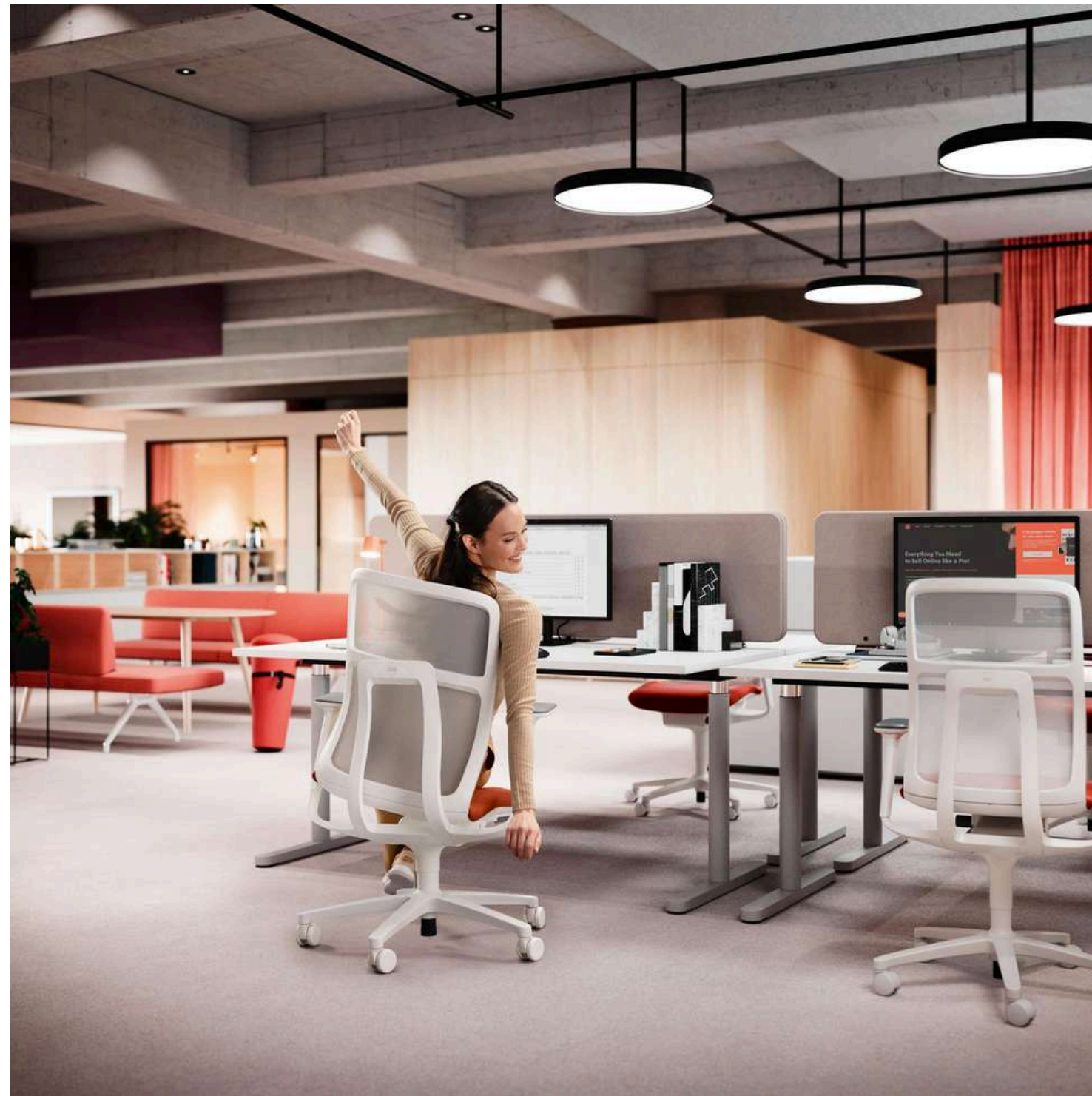


Our Furniture Partners



MUTE.

Our Furniture Partners



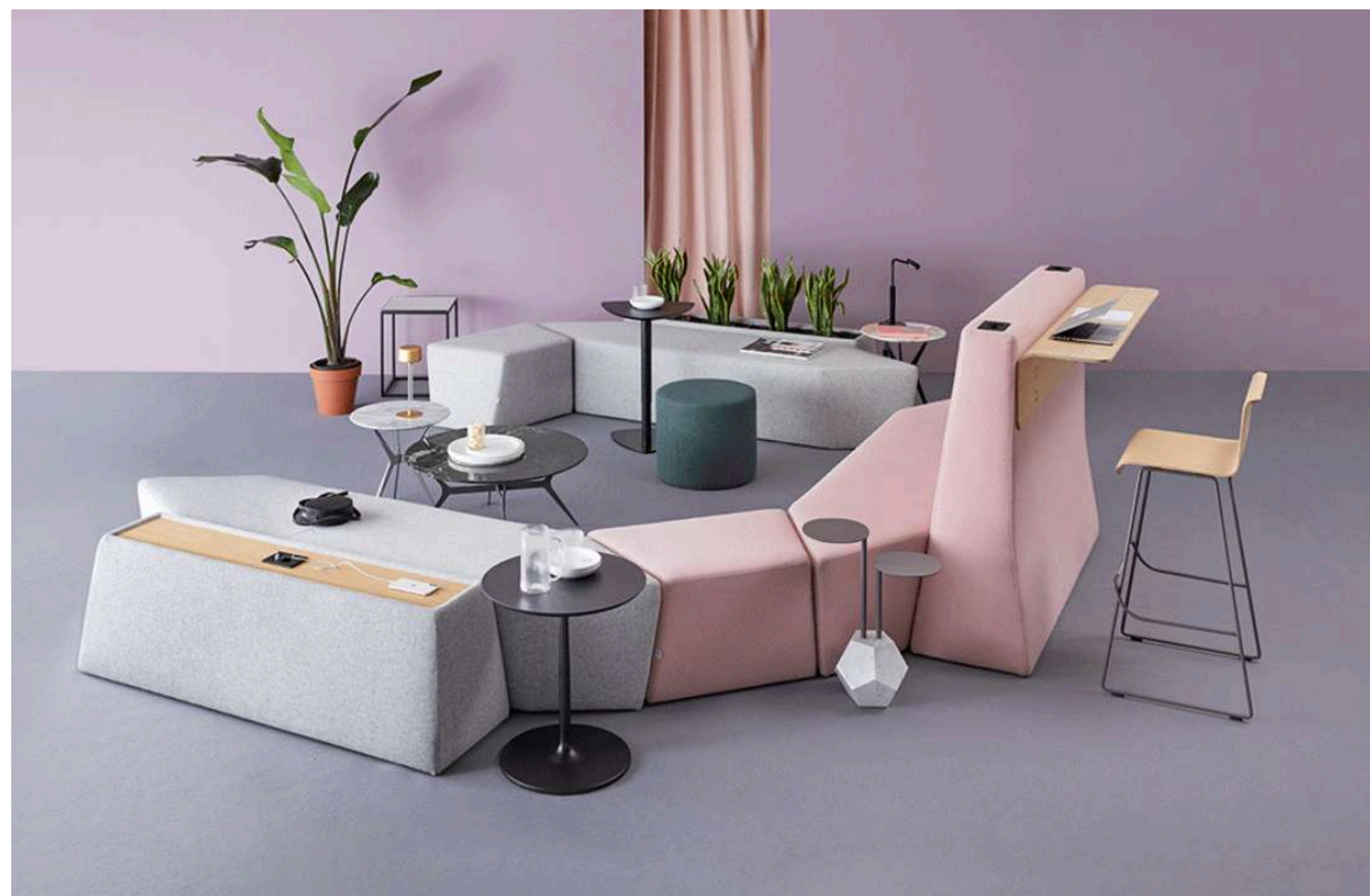
Wilkhahn

Our Furniture Partners



vitra.

Our Furniture Partners



sitia

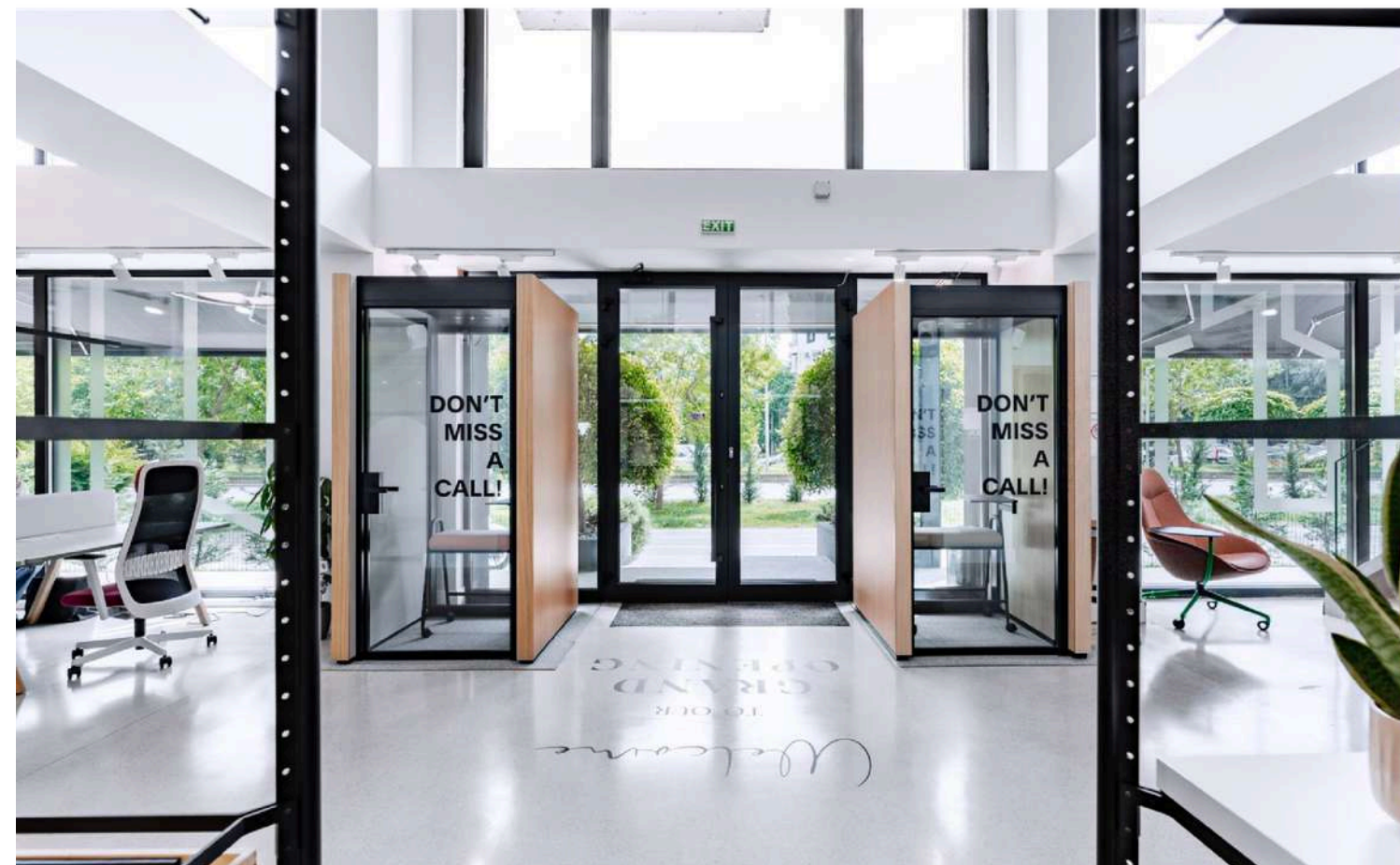
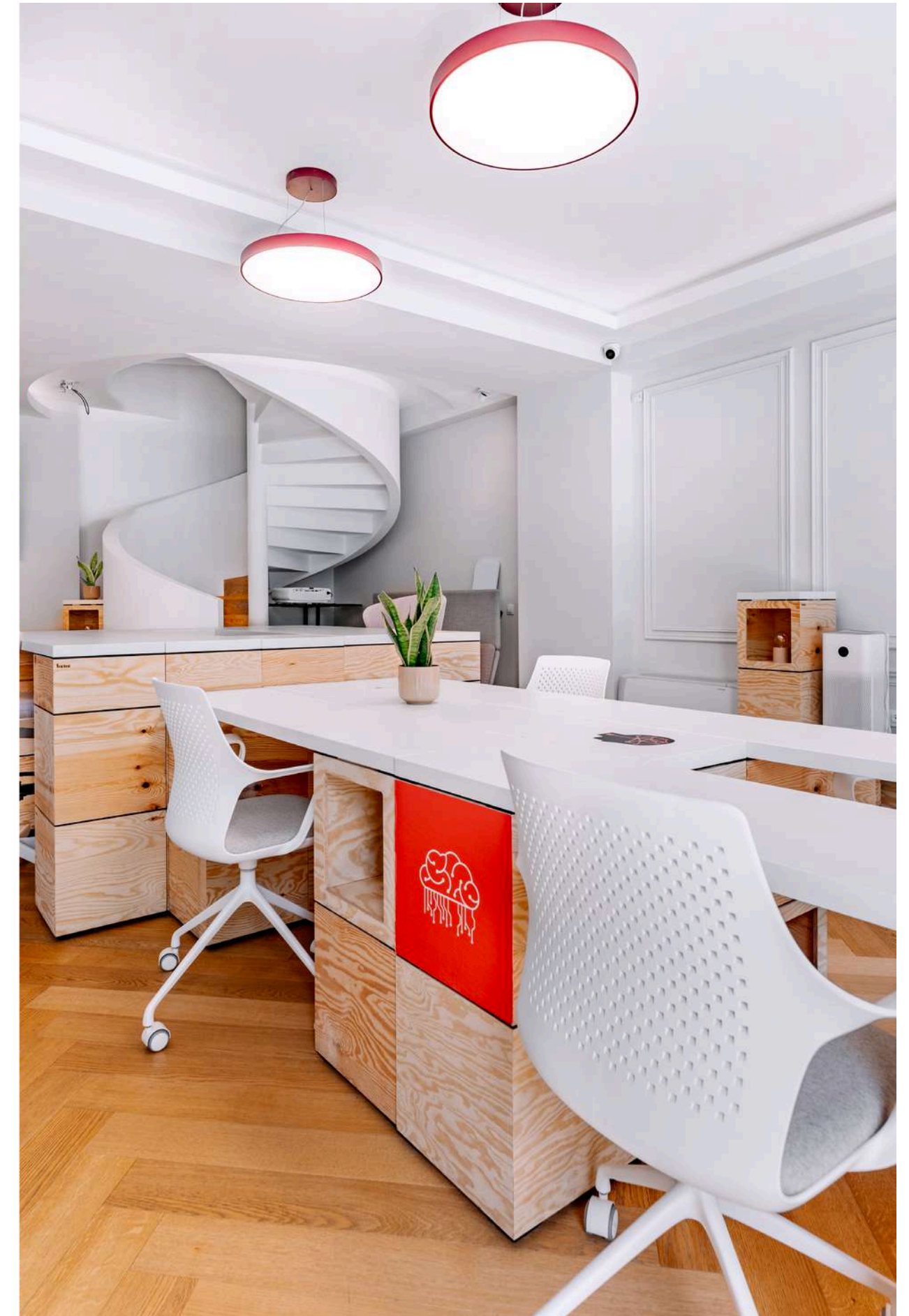
Property One Bene & Molto Luce Showroom



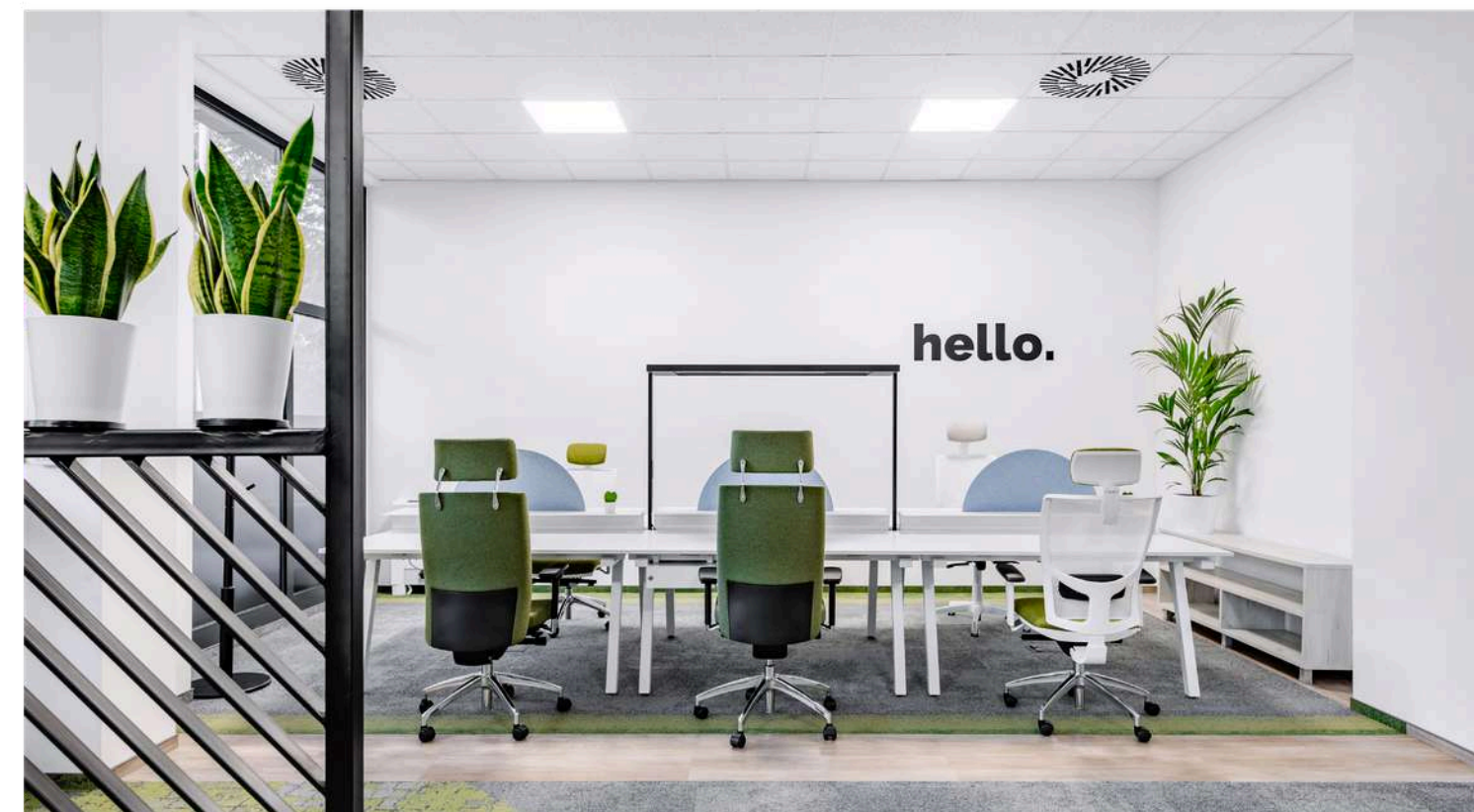
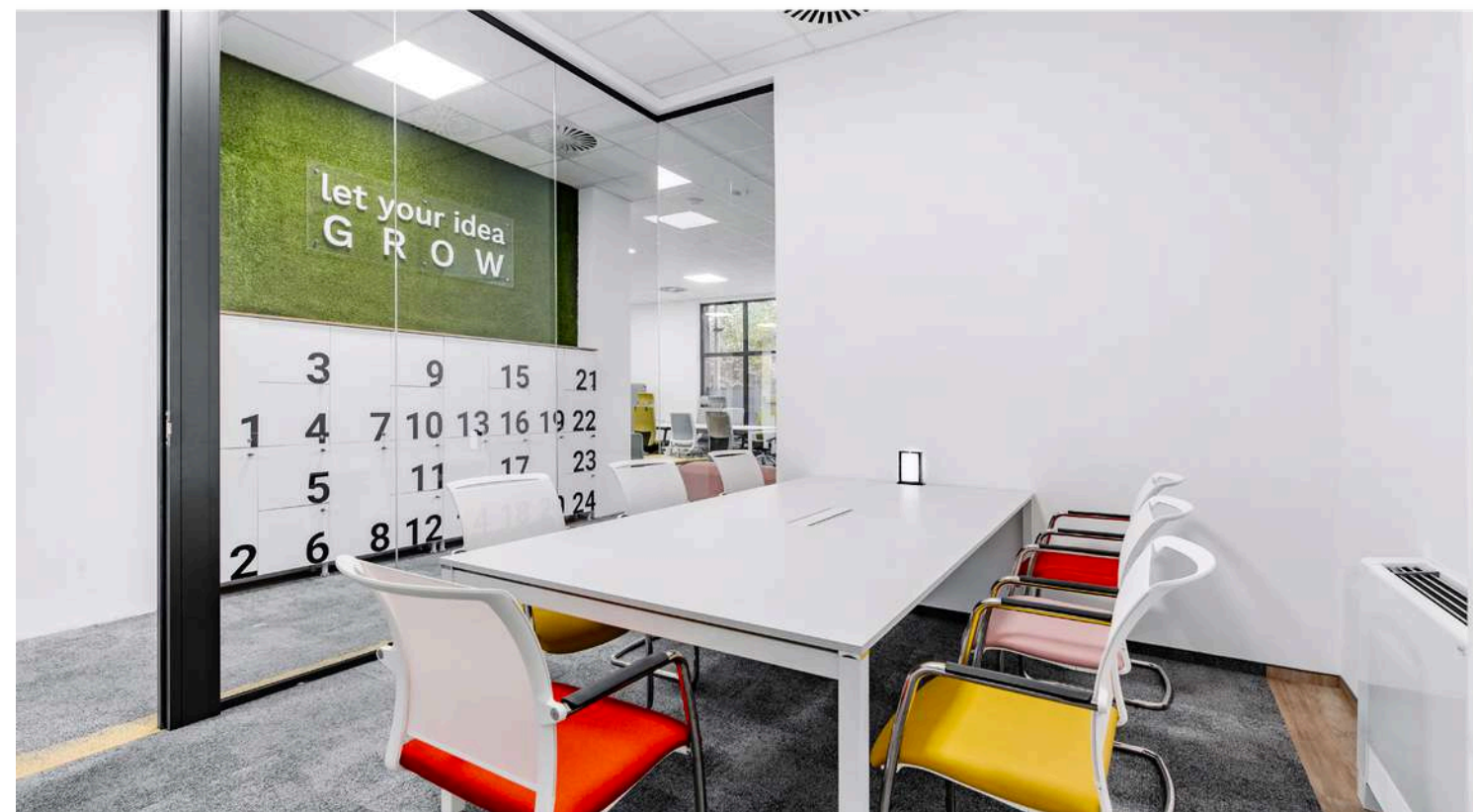
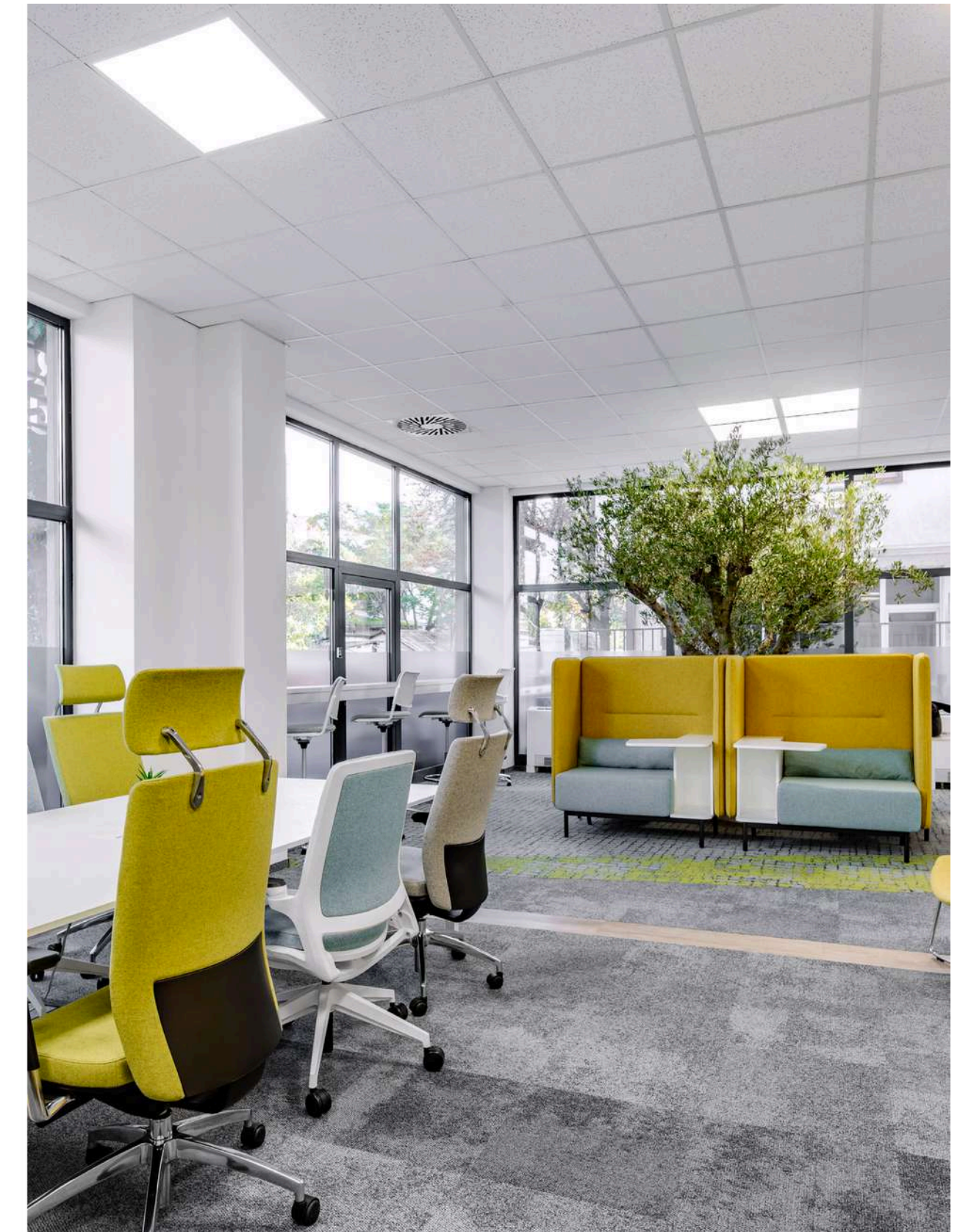
Our first Bene Showroom in the Balkans! In this space, we offer you the opportunity to explore the latest models of Phone Booths, Conference Tables, Bene Pixels, Sofas, Lounge Seating and many other products. Here, you'll find functional solutions for every office space.

You will also receive personalized consultations from the Parallel Group Architects team for any of your projects – completely free of charge! We invite you to visit us and experience the products firsthand at our showroom.

Property One Bene & Molto Luce Showroom

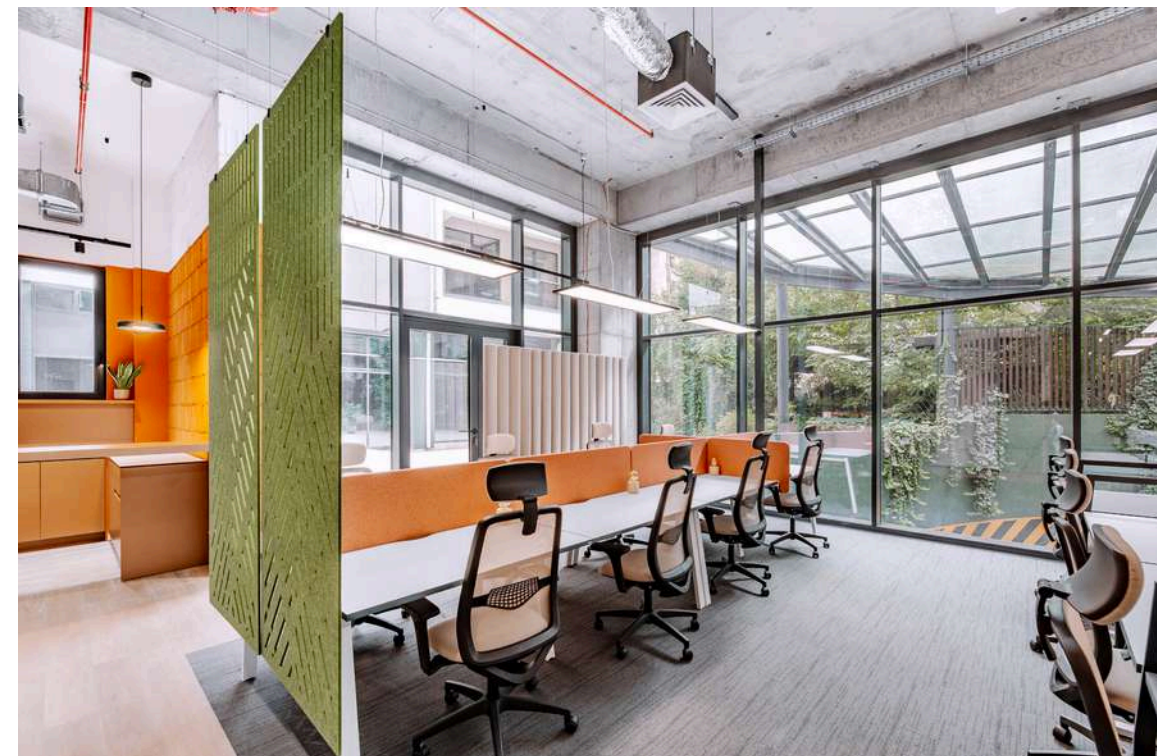
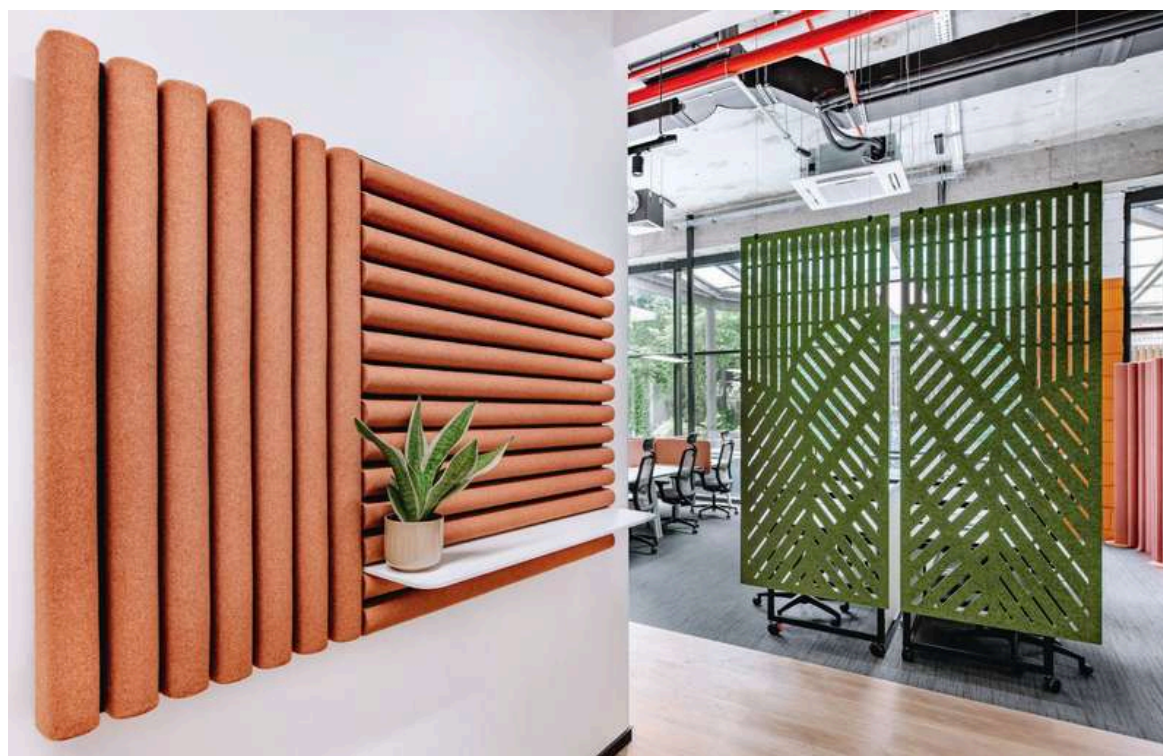
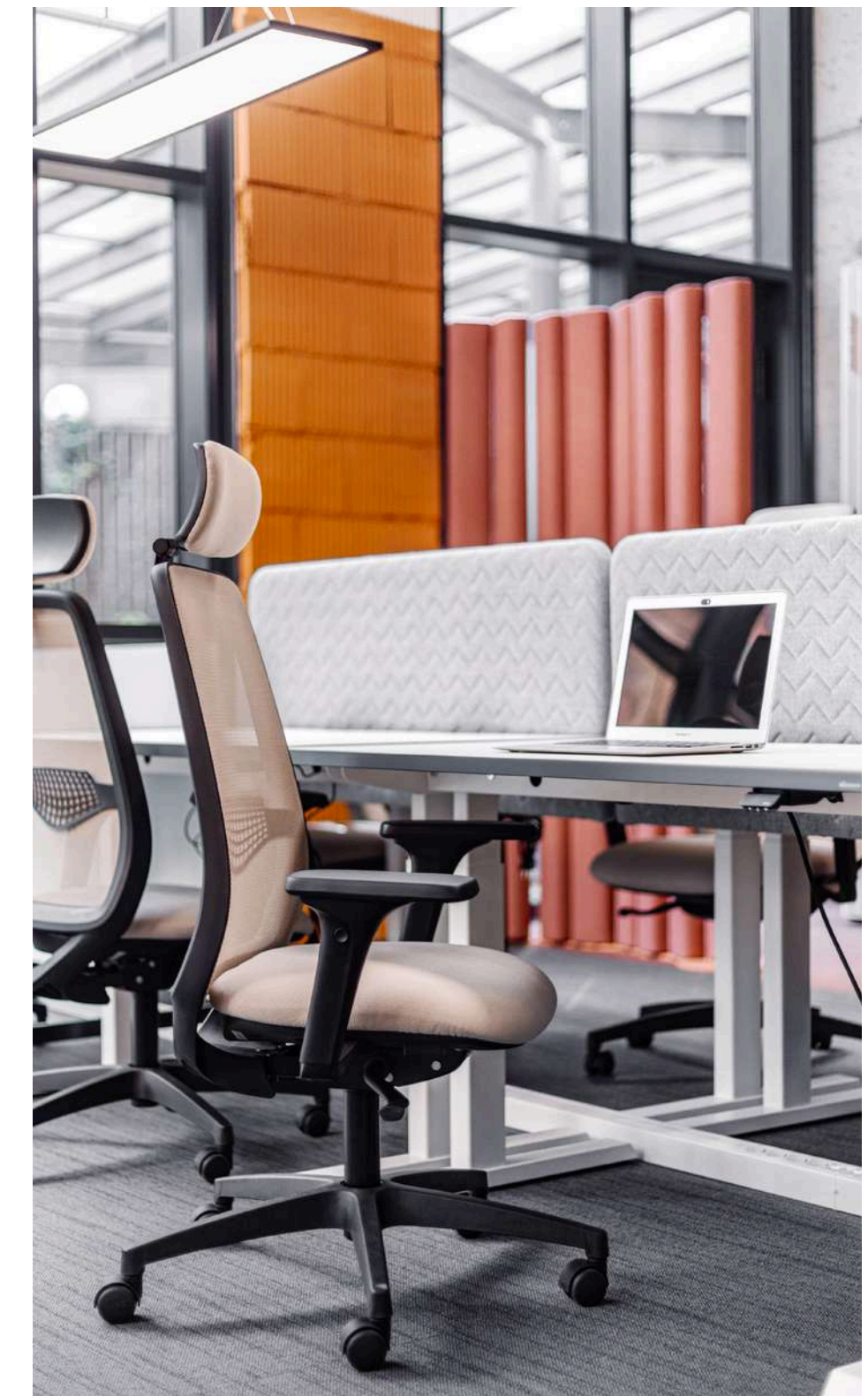
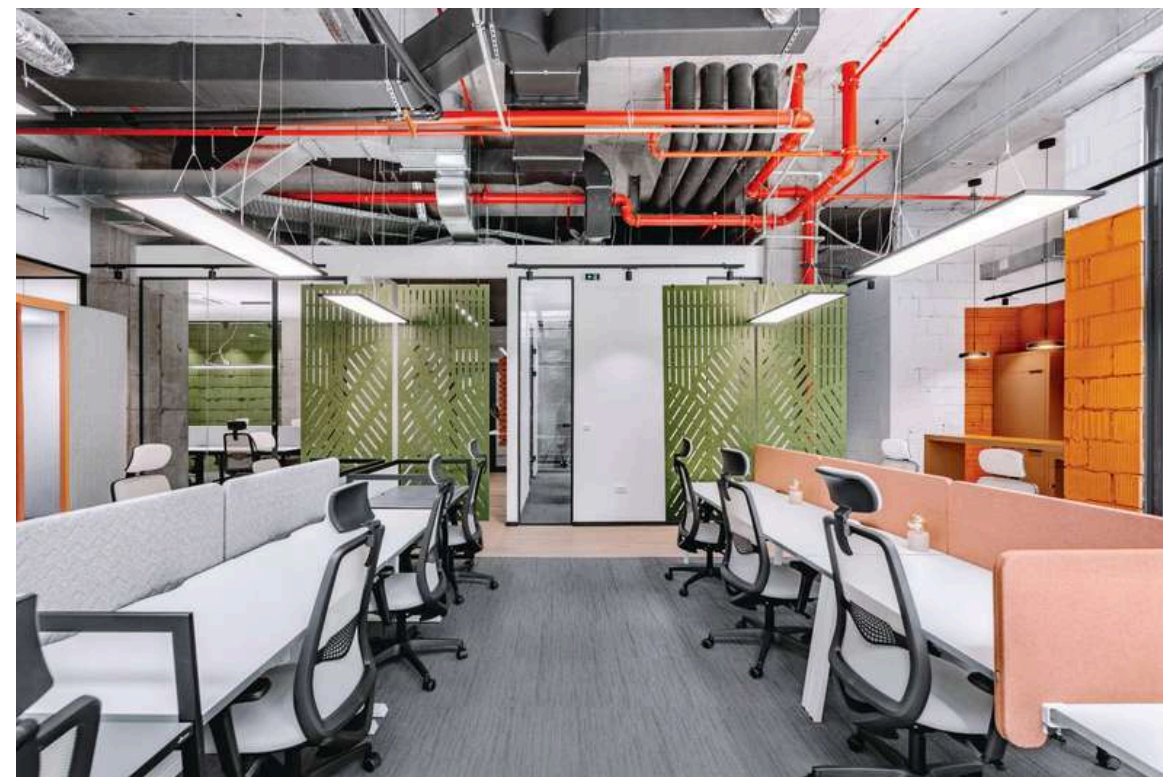


IVM & Leyform Office Furniture Showroom



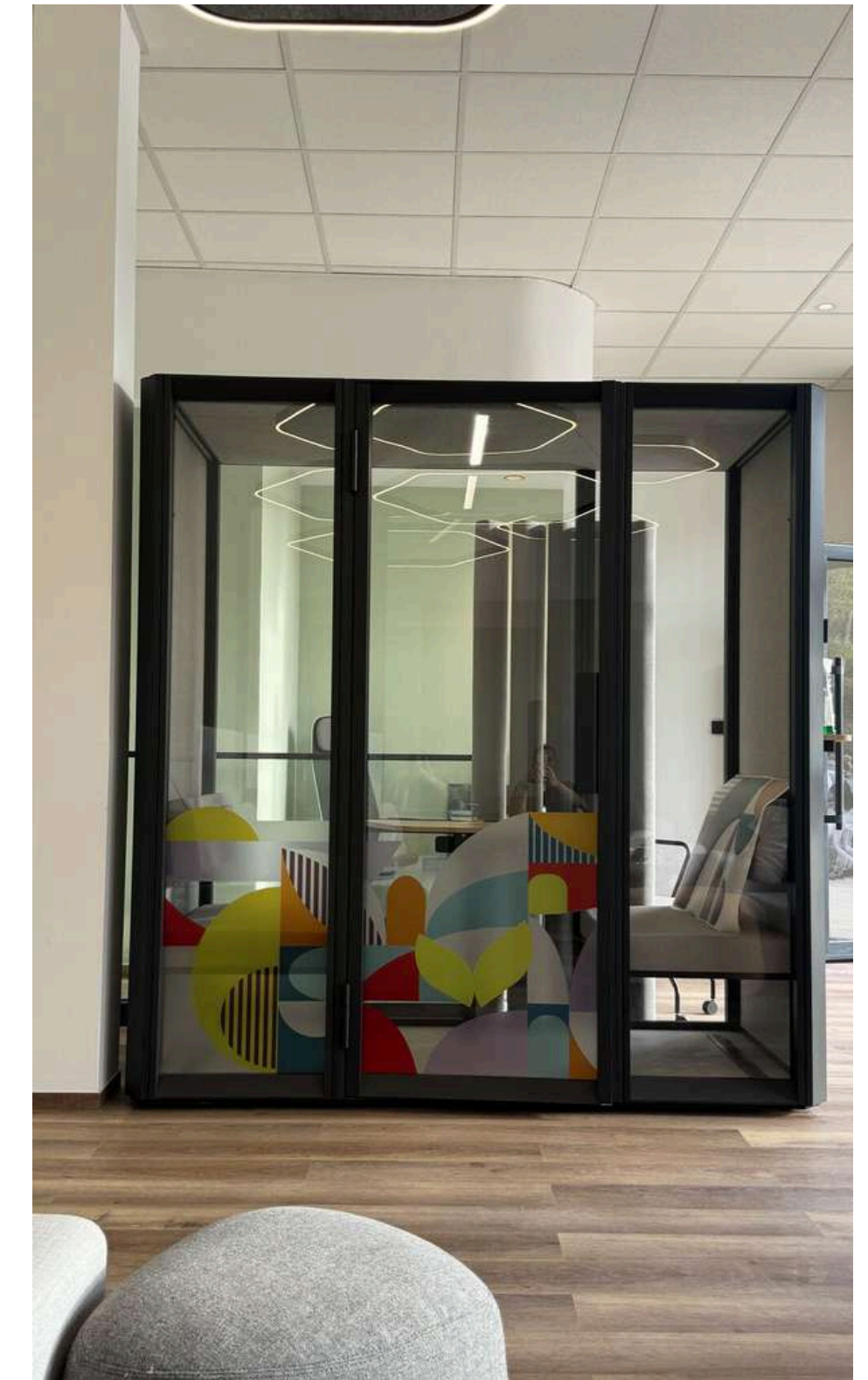
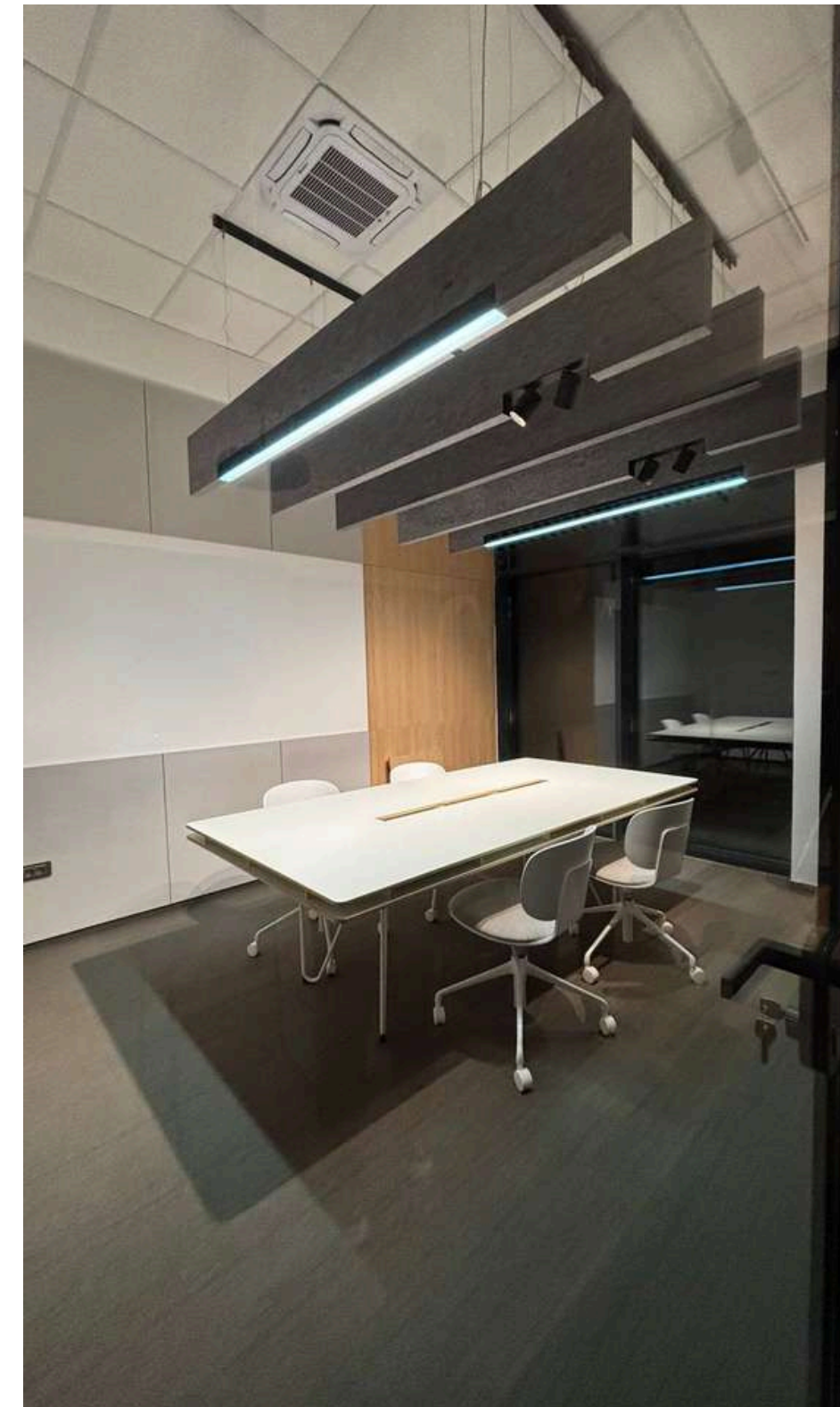
After the Bene showroom, we proudly opened our **second showroom featuring IVM & Leyform products**. We invite clients to take advantage of a unique opportunity for free testing – experience all the features, discover the functionality and enjoy the ultimate comfort of these premium office solutions before you buy!

Maro Showroom



Our **third showroom features Maro products**, a renowned Polish brand offering innovative and high-quality office solutions. Maro provides a wide range of ergonomic and stylish furniture designed to improve comfort and productivity in any workspace.

Novi Sad, Serbia Showroom



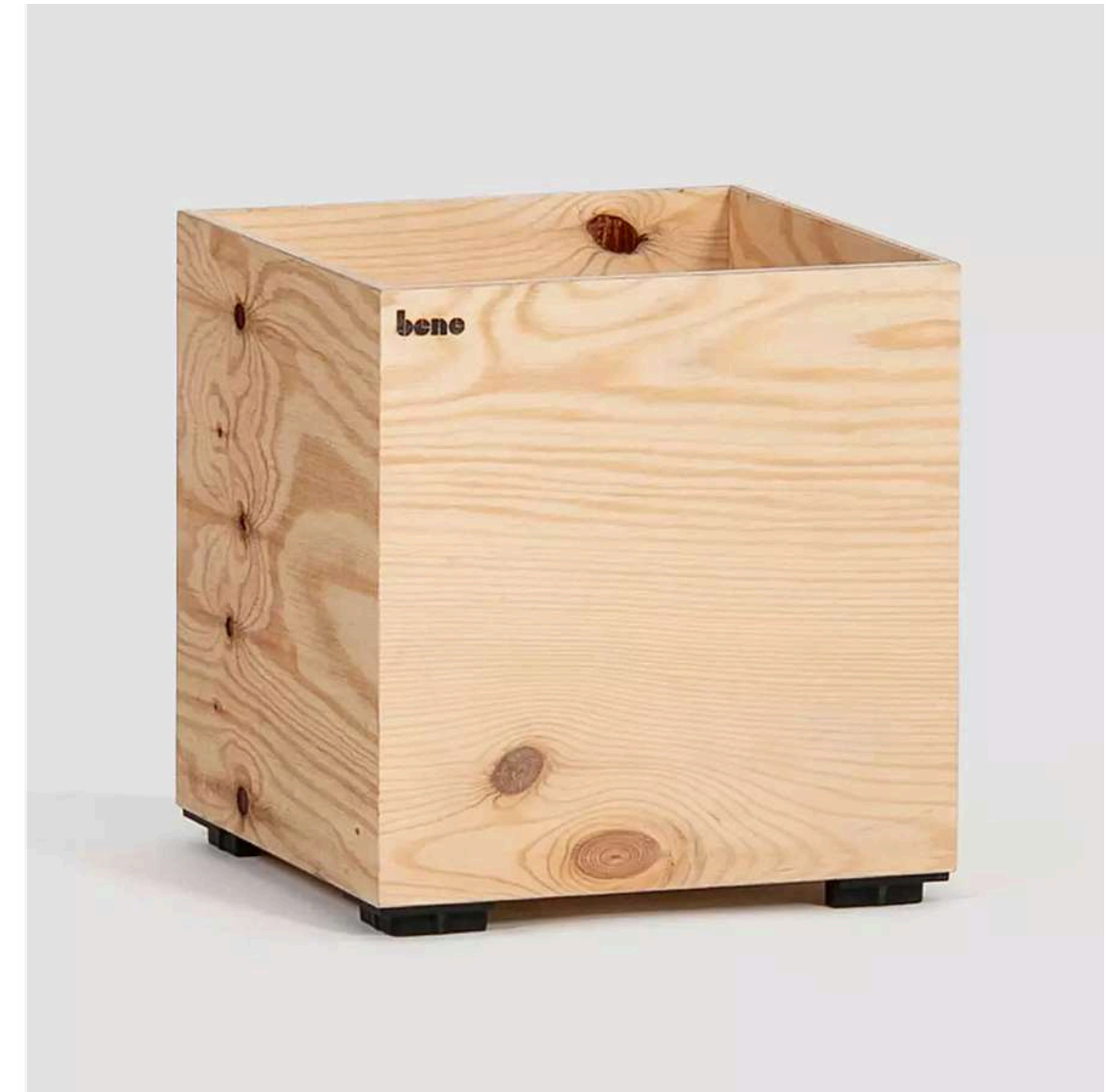
Our **newest showroom** has officially opened in Novi Sad, Rumenacka 124a, where you can discover a curated selection of office furniture from our renowned brand partners.

MoltoLuce Lighting Solutions



Introducing the exclusive MoltoLuce Lighting Solutions, a pinnacle of sophistication available exclusively through Property One Furniture. Elevate and transform your workspace with the brilliance of meticulously crafted lighting, fostering not only a well-lit ambiance but also an environment that thrives on heightened productivity through these innovative solutions.

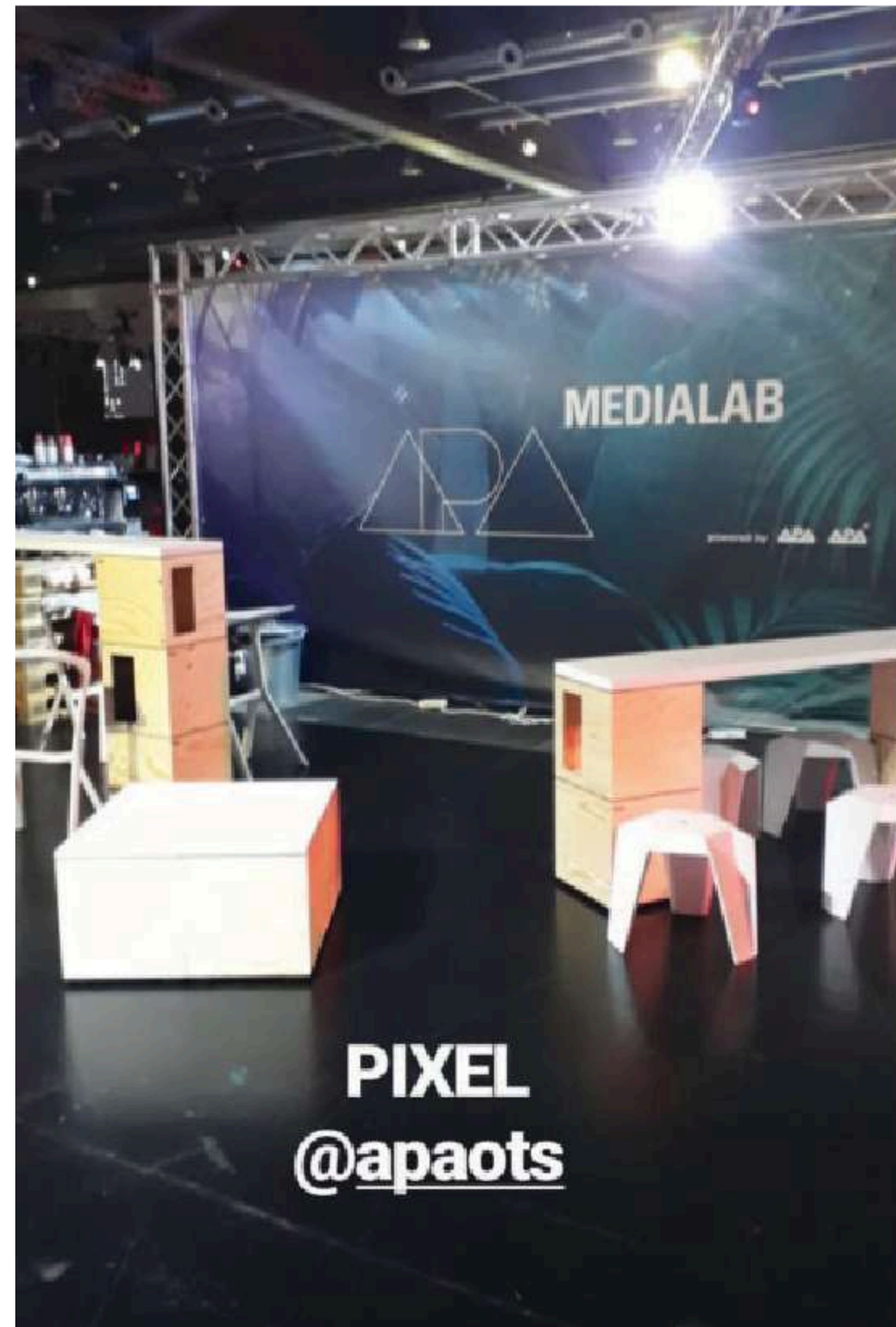
We Create Workplaces For New Lifestyles



OUR BEST-SELLING BENE PIXELS

Our workspaces provide the ideal environment for innovation and productivity. With Bene PIXEL, Property One Office Furniture offers a versatile platform for creative expression and functional design. Redefine your space with Bene PIXEL's versatility, inspiring creativity and improvisation at every turn, backed by the ingenuity of our company.

Satisfied Customers Of Bene Pixels



Our partners Bene, provide innovative office solutions trusted by top companies worldwide. Their Pixels line is known for enhancing creativity and productivity in modern workspaces, chosen by businesses for its flexibility and functionality.

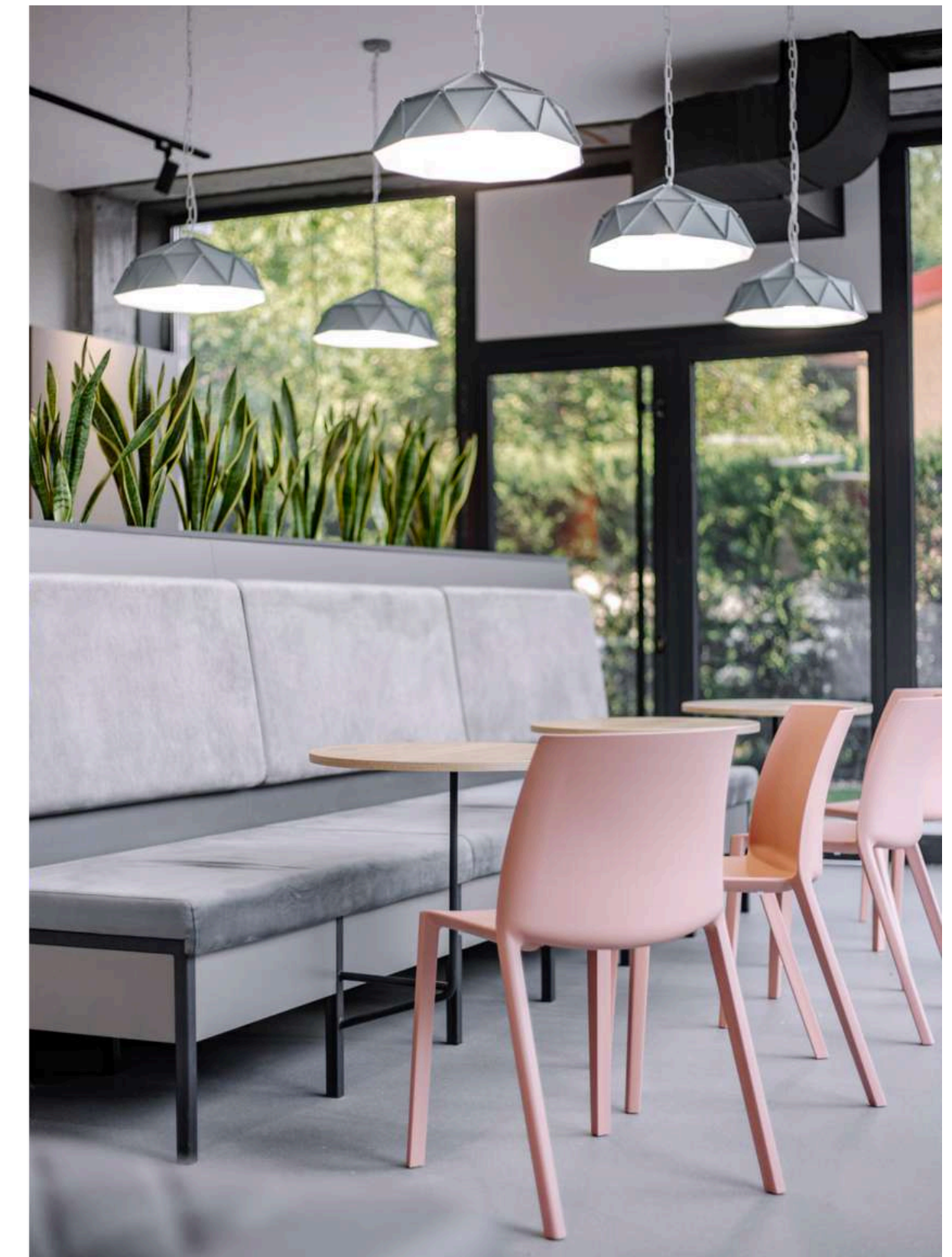
Our Projects - QiH



The design team was tasked with creating a space that supported QiH London core business operations and its growing presence.

Client: QiH London
Year & Duration: Apr-Jun/22
Budget: ~130.000€
Project & Development of Interior
Heating and cooling systems and installations.

Our Projects - QiH



Art, texture, fabric and furnishings are used to champion the spirit and identity of the company

Our Projects - QiH



The current space spans across 420m2 and reflects QiH's focus on environmental sustainability, which is prioritized across all QiH offices.

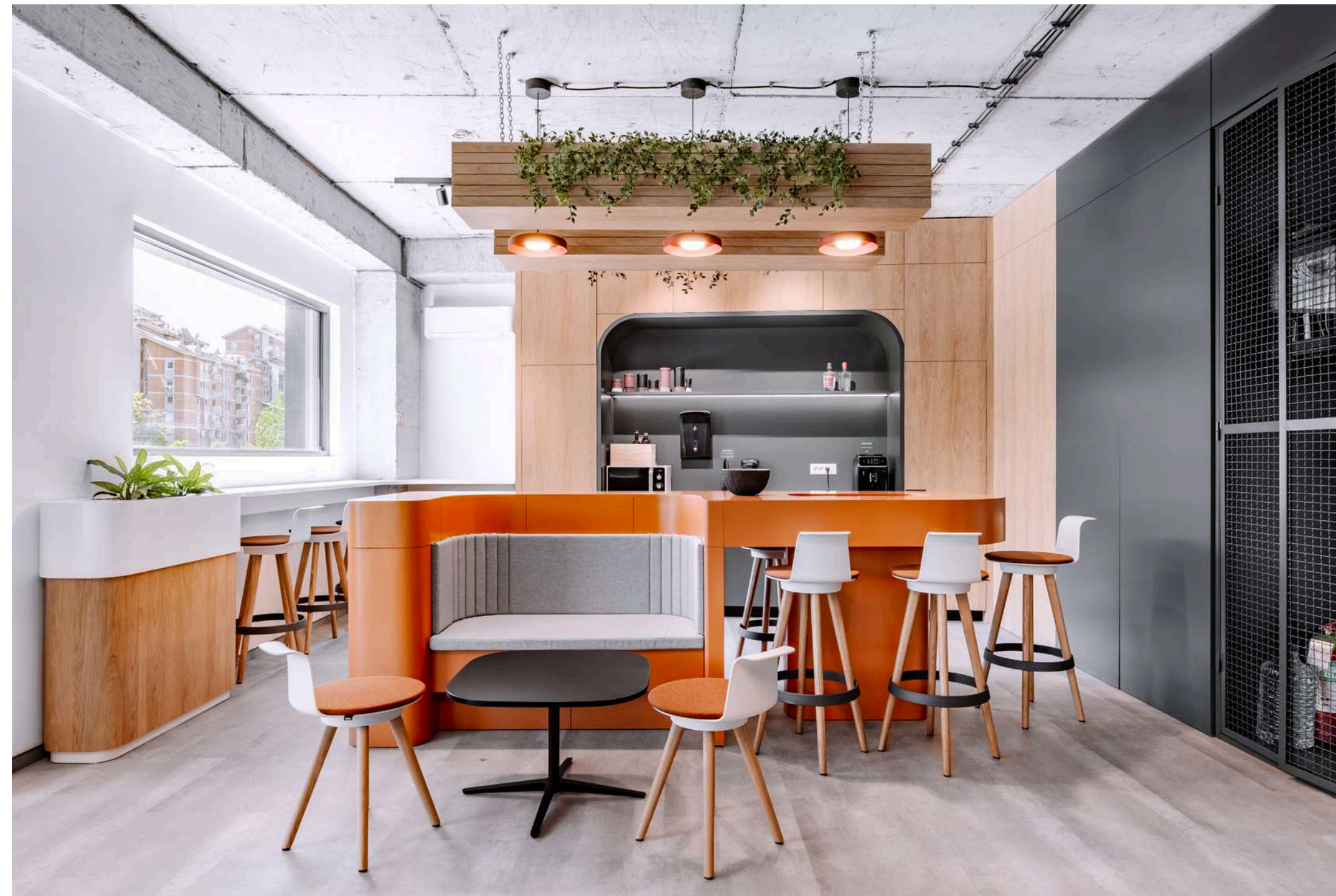
Our Projects - Salience Consulting



With culture top of mind, the design team did a lot of research, including interviewing staff about what they love most about their work in order to convey the aesthetics of the Salience culture and create a vibrant, inspiring environment.

Client: Salience Consulting
Year & Duration: Feb-May/24
Budget: ~250.000€ Project &
Development of Interior

Our Projects - Salience Consulting



The resulting look and feel of the office interiors blend the romance of industrial design with the modern vibe of a technology hub.

Our Projects - Lear Automotive



A 1,000 m2 complete interior project fully designed and executed by us, with a total cost of €600,000, including full interior works, carpets and LVT flooring, furniture, glass partitions, and acoustic solutions.

Client: Lear Year & Duration:
In Progress Budget: ~600.000€
Furniture: Full Interior - Carpet, Lvt,
Furniture, Glass Partitions, Acoustics

Our Projects - Lear Automotive



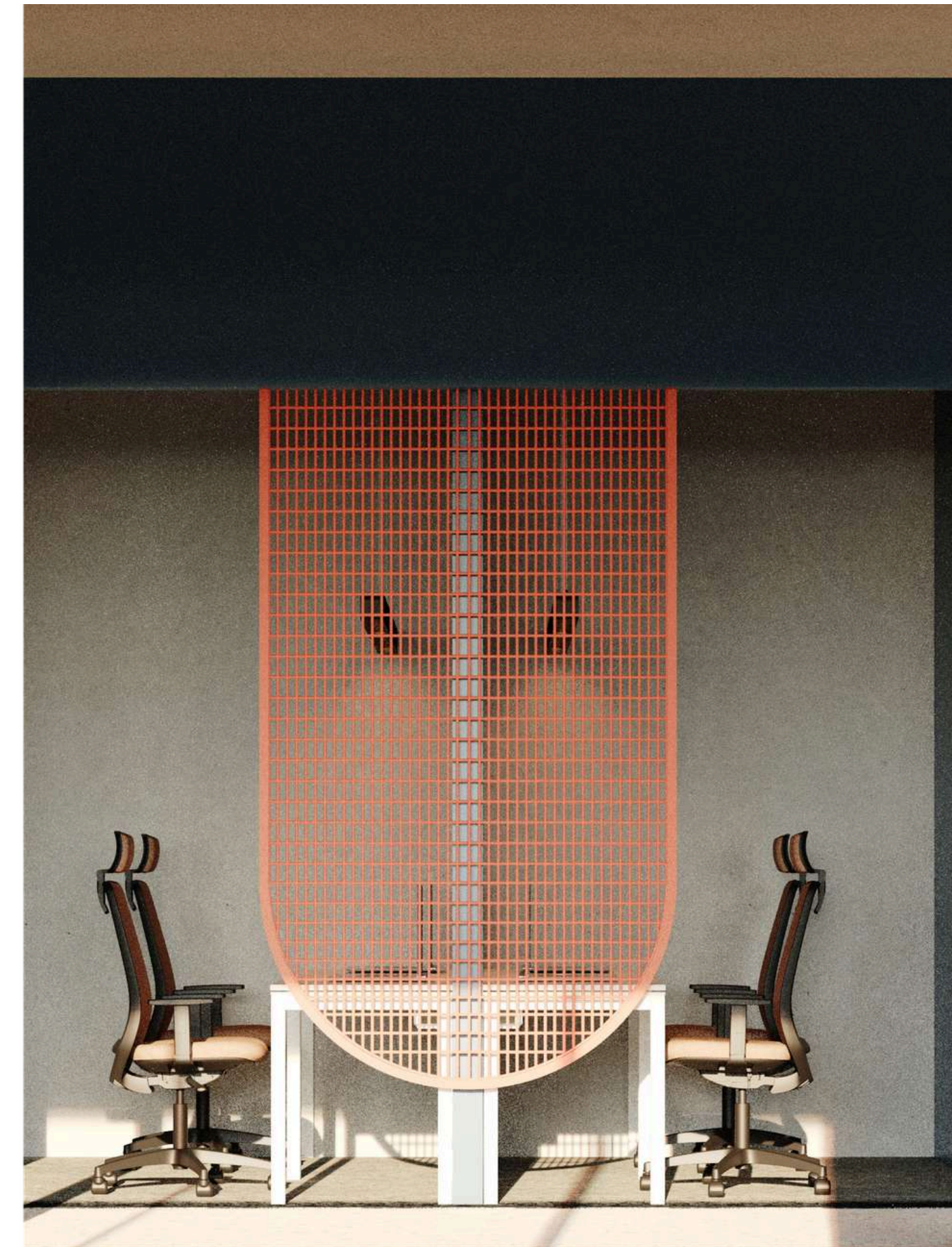
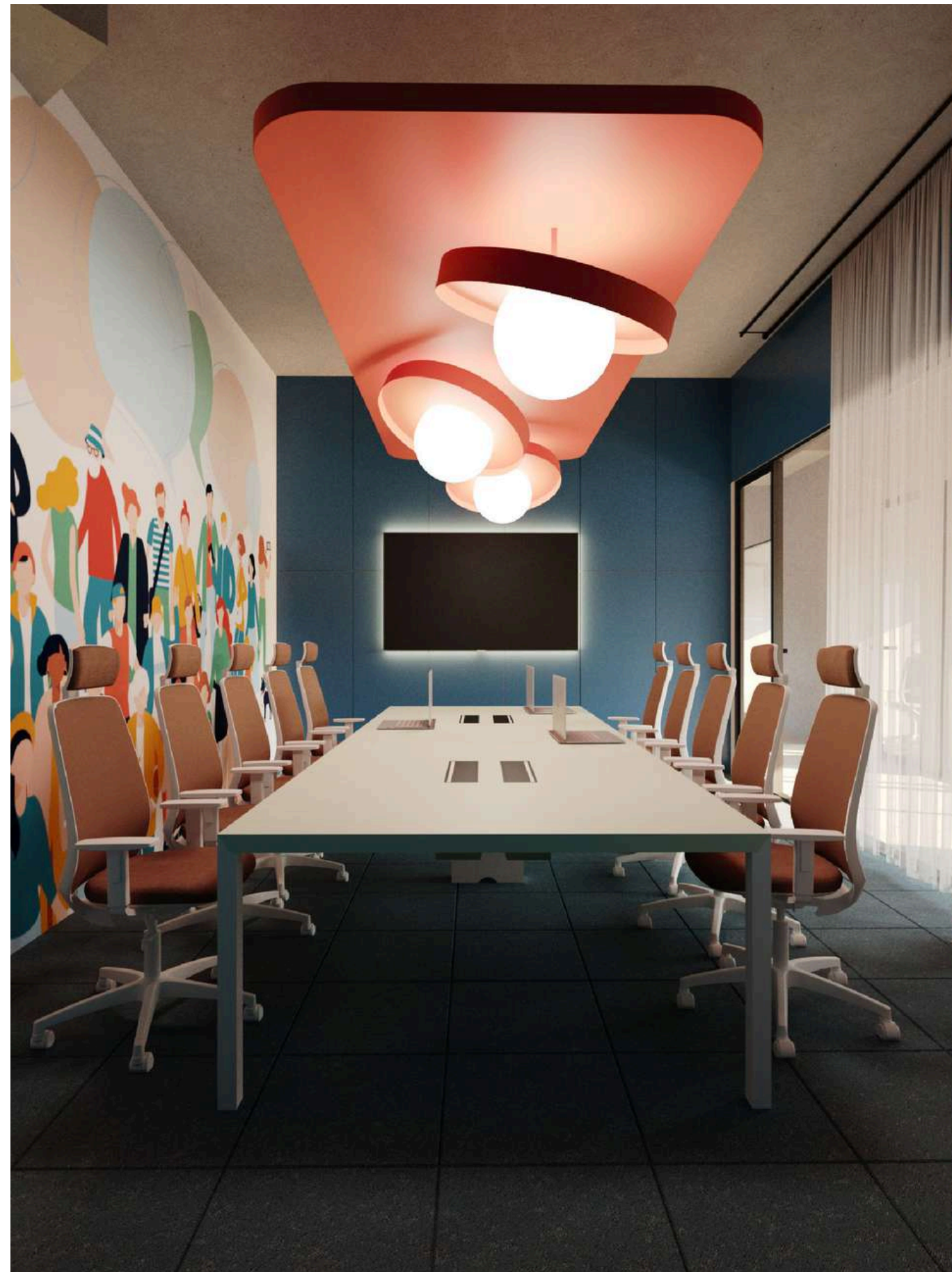
Our Projects - Nest Co-Work Montenegro



Full turnkey project for Nest Co-Work Montenegro.

Client: Nest Co-Work Spaces Year &
Duration: Ongoing project Project &
Development of Interior Furniture:
Bene, IVM, Leyform, MoltoLuce
Location: Podgorica, Montenegro

Our Projects - Nest Co-Work Montenegro



Our Projects - Valtech



A 2,500 m2 complete interior project, fully designed and executed by us, with a total cost of €750,000, covering full interior works, carpets and LVT flooring, furniture, glass partitions, and acoustic solutions.

Client: Valtech

Year & Duration: In Progress

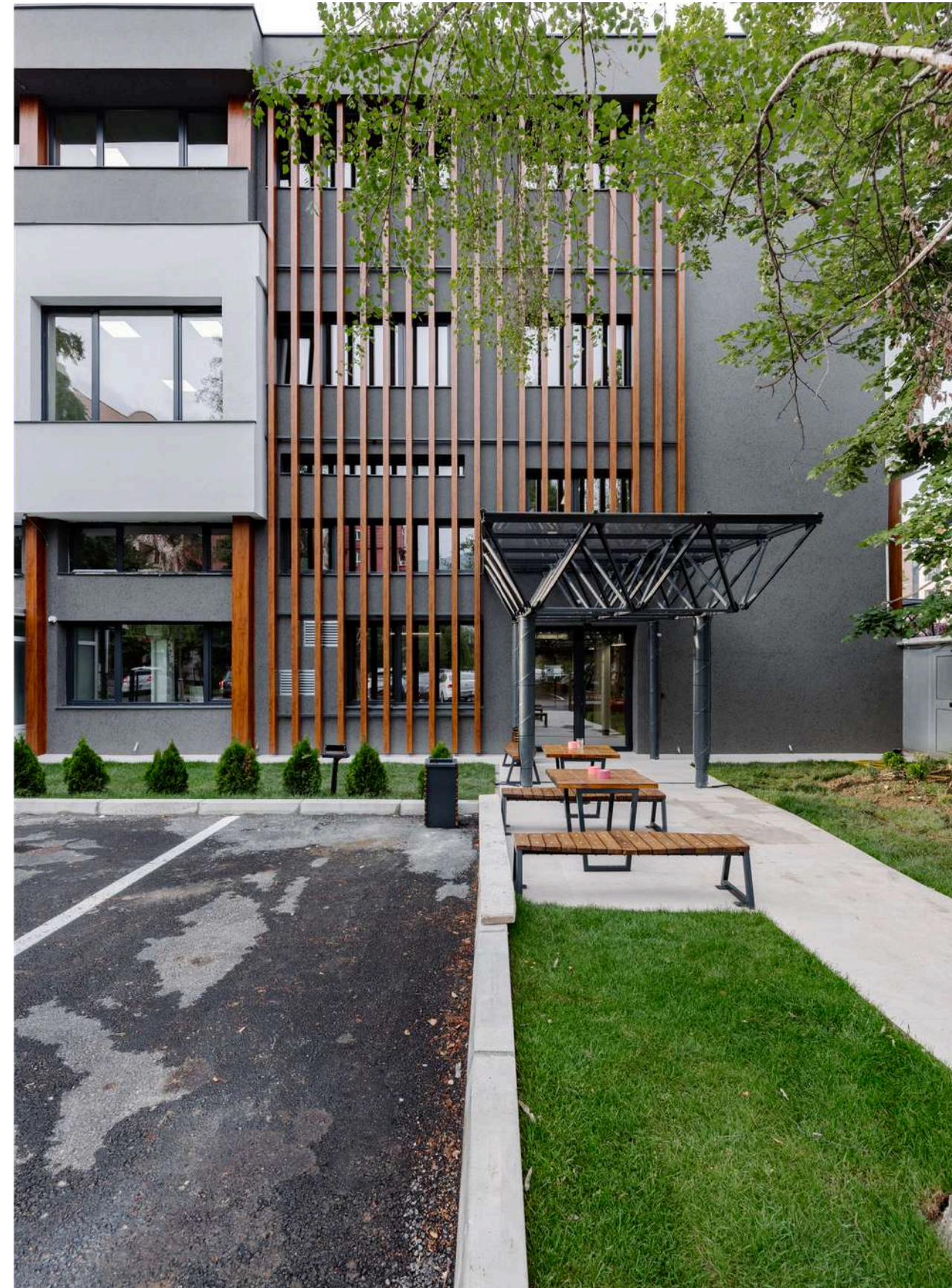
Budget: ~750.000€

Furniture: Full Interior - Carpet, Lvt, Furniture, Glass Partitions, Acoustics

Our Projects - Valtech



Our Projects - Mak System



Full renovation and furnishing project for the English health-care software development company Mak-System.

Client: Mak-System

Year & Duration: Jan-Jun/23

Budget: ~400.000€

Project & Development of Interior

Furniture: Leyform, Vigano & Custom Design

Our Projects - Mak System



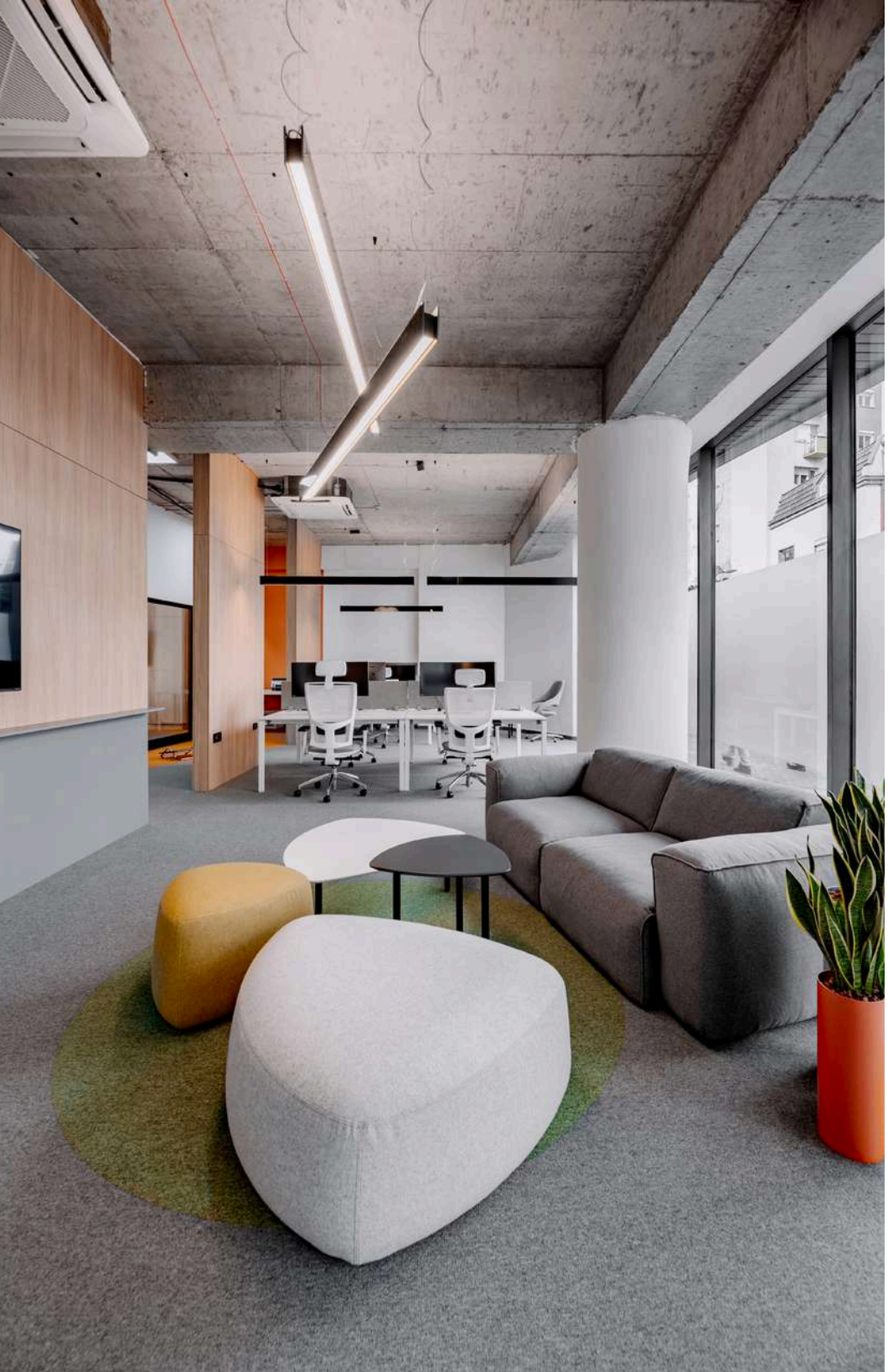
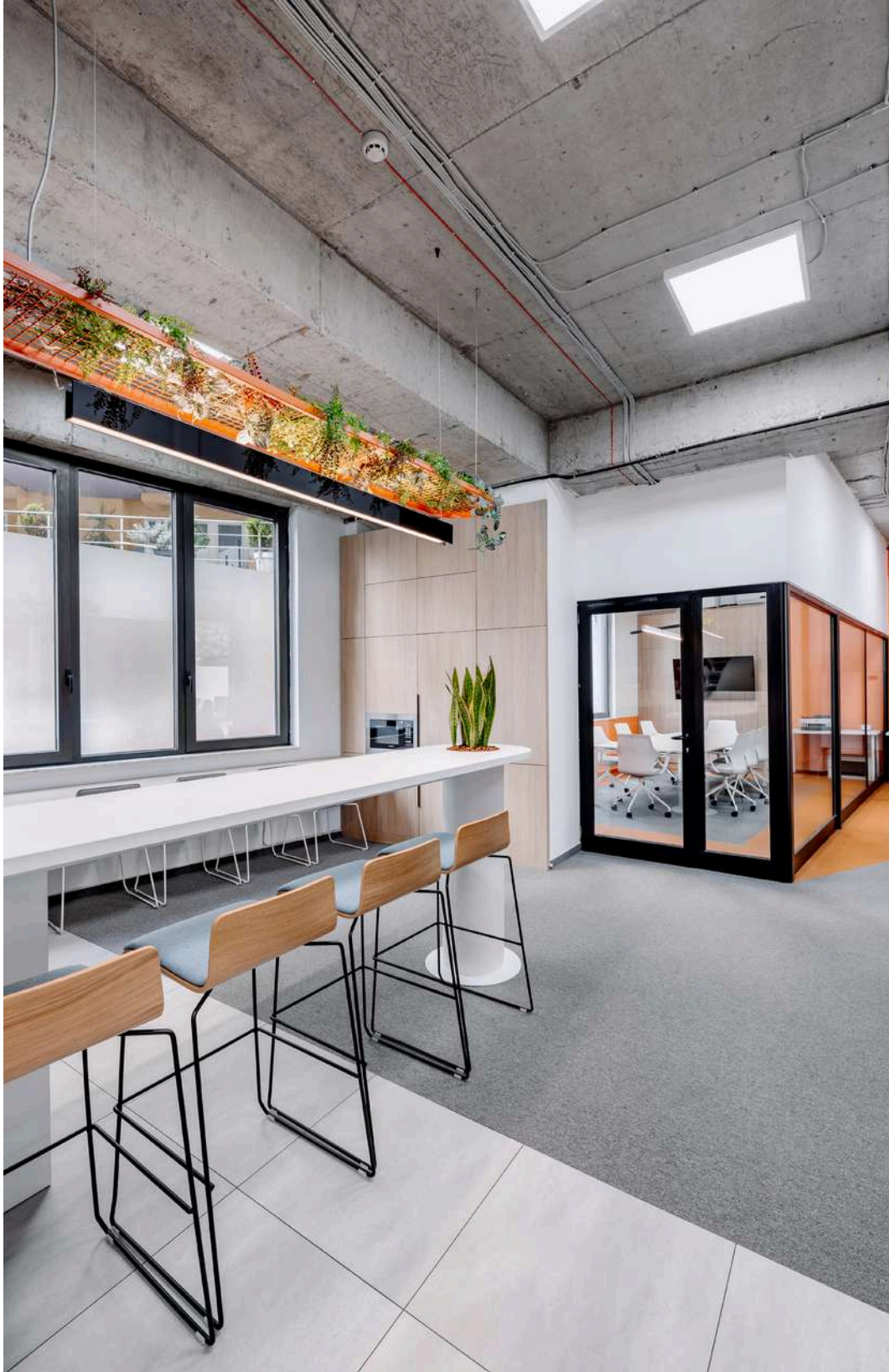
Our Projects - Gamma Tech



Interior and furniture design for the Swiss company Gamma Tech.

Client: Gamma Tech
Year & Duration: Jan-Mar/23
Budget: ~120.000€
Project & Development of Interior
Furniture: IVM Office/ Leyform Heating
and cooling systems and installations.

Our Projects - Gamma Tech



Our Projects - T-Accounting Montenegro



This office features a spacious 4.2m ceiling, divided into client and private zones. A neutral palette with green accents, wood details, and exposed concrete creates a professional yet welcoming atmosphere. Contact us to bring your vision to life.

Client: T-Accounting
Year & Duration: In Progress
Furniture: Full Interior - Carpet, Lvt,
Furniture, Glass Partitions, Acoustics

Our Projects - T-Accounting Montenegro



Our Projects - Link Mobility



Located in East Gate Mall, this space combines modern design with warm elements, using a neutral palette, clean lines, and soft textures for a calm, balanced atmosphere. Wood, fabric panels, and matte finishes add warmth while maintaining visual clarity. The design supports diverse work styles, from focused tasks to informal meetings, for everyday adaptability.

Client: Link Mobility

Year & Duration: In Progress

Furniture: Full Interior - Carpet, Lvt, Furniture, Glass Partitions, Acoustics

Our Projects - Link Mobility



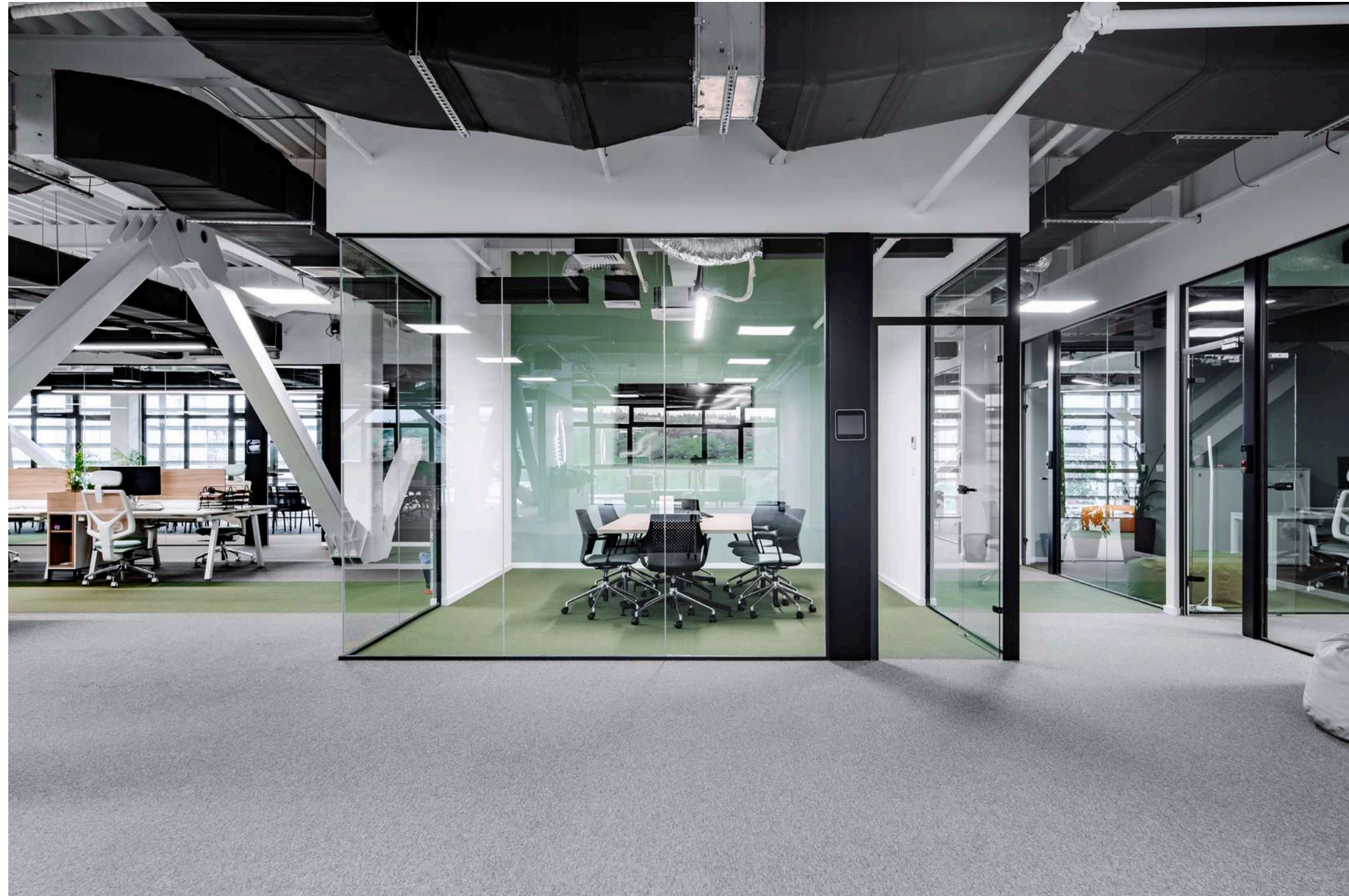
Our Projects - Quipu



Full turnkey project for the German banking software company Quipu.

Client: Quipu
Year & Duration: Feb-Apr/23
Project & Development of Interior
Budget: ~250.000€
Furniture: IVM, Leyform & Vigano

Our Projects - Quipu



The design of the 1560m² space included creating visual cues that orient the user and reinforce connectivity with functional areas with a lot of natural daylight from all sides. The design emphasizes clean lines, natural materials and modern finishes that complement the high quality furnishings.

Our Projects - Division



Interior and furniture design for
anew Business Building in Skopje.

Client: DIVISION
Year & Duration: Ongoing
Budget: ~850.000€
Project & Development of Interior

Our Projects - Division



The design of the 3000m² space included creating visual cues that orient the user and reinforce connectivity with functional areas with a lot of natural daylight from all sides. The design emphasizes clean lines, natural materials and modern finishes that complement the high quality furnishings.

Our Clients



Contact Information



EMAIL

furniture@propertyone.mk | contact@propertyone.rs

PHONE

+389 75 280 036 | +381 65 389 2222

SOCIAL MEDIA

propertyone_officefurniture | p1furniture_srbija